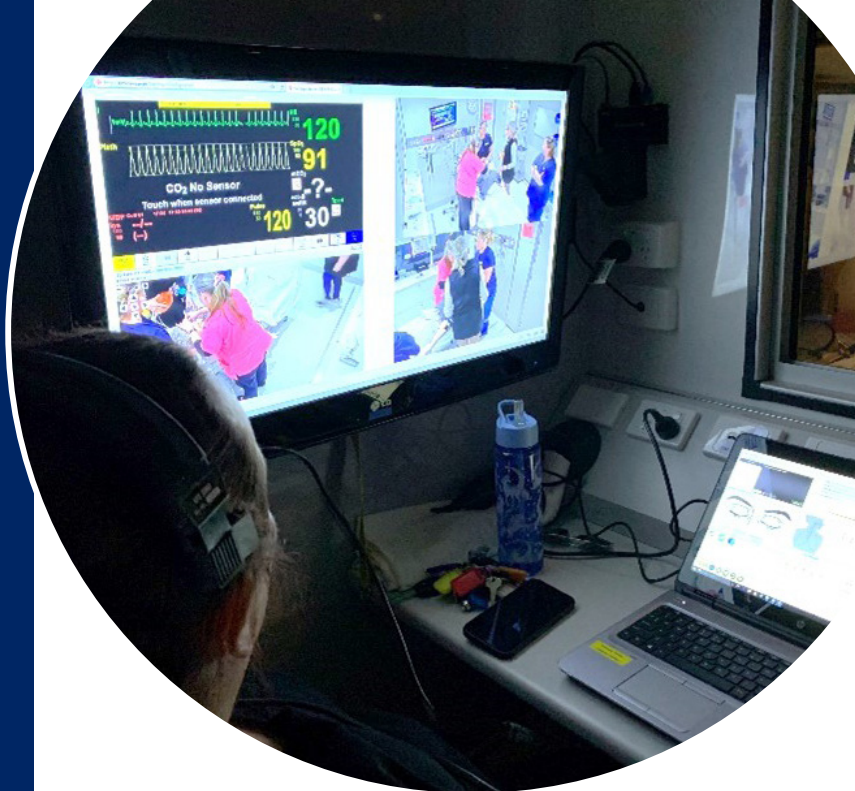


HETI SENIOR EXECUTIVE FORUM REPORT

FEBRUARY 2026



Simulation Fundamentals supports interprofessional clinical educators who use, or plan to use, simulation in their education programs.

SIMULATION FUNDAMENTALS COURSE FOR RURAL EDUCATORS, BATHURST 20-21 JANUARY 2026

The Centre for Rural Simulation made an early start to a new year of rural education with Simulation Fundamentals delivered in Bathurst on 20 and 21 January. Educators from across Western NSW LHD came together for two days of practical, hands-on learning focused on developing simulation activities, creating safe learning environments and facilitating effective debriefing conversations.

Three more courses are scheduled for the first half of this year with final dates to be released shortly.

Leeton in Murrumbidgee LHD – March 2026
Armidale in Hunter New England LHD – May 2026
Grafton in Northern NSW LHD – June 2026

Simulation Fundamentals supports interprofessional clinical educators who use, or plan to use, simulation in their education programs. It offers practical tools and tips that participants can put into practice straight away in their own services.

By delivering the program directly in rural locations, educators can learn without the need for travel and can continue building networks within their district. The Centre for Rural Simulation supports the sustained development of education teams to provide safe, effective simulation practice across rural NSW.

→ Contact: heti-simulation@health.nsw.gov.au

STATEWIDE GUARDIANSHIP TRAINING FOR NSW HEALTH FACILITIES

NSW Health has updated the statewide practice guidelines (GL2025_008), resources and tools to strengthen and streamline processes for patients in our facilities who are awaiting Guardianship matters to be heard by the NSW Civil and Administrative Tribunal (NCAT). These materials are designed to support healthcare professionals involved in preparing and submitting guardianship applications and clinical reports.

To support implementation, HETI will be delivering targeted workshops to Western NSW Local Health District (Dubbo, Parkes and Orange), on 25, 26 and 27 February 2026 covering:

- Understanding the Guardianship Guidelines
- Knowing when a guardianship application is needed
- Approaching capacity assessments as a multidisciplinary team
- Using standardised tools and templates to support quality NCAT applications

This training will provide valuable access for rural and regional facilities where complex guardianship matters often intersect with workforce challenges, geographic isolation and limited local specialist resources. Delivering this training locally supports capability building, improves consistency of practice and promotes timelier, coordinated guardianship outcomes for patients and teams.

→ Contact: daniella.pfeiffer@health.nsw.gov.au

THE FUNDAMENTALS OF PAEDIATRIC NURSING LEARNING PATHWAY



HETI, in partnership with the NSW Health Nursing and Midwifery Office (NaMO), has developed the Fundamentals of Paediatric Nursing program. This program provides a structured education pathway to support nurses delivering care in non-specialised paediatric settings across NSW.

Aligned with the novice to advanced beginner levels of the NSW Health Paediatric Nursing Education and Training Framework, the program consists of nine modules that offer a standardised yet flexible approach to building foundational paediatric nursing skills. Designed with input from clinical experts and consumers, the pathway supports safe, evidence-based practice.

Together, the key program components - eLearning modules, work-integrated learning activities, and a capability assessment, develops clinical expertise and promotes accurate, compassionate, and inclusive care for children and their families.

More information can be found [here](#).

→ Contact: Paul.Rutten@health.nsw.gov.au

NSW RURAL ALLIED HEALTH POSTGRADUATE SCHOLARSHIPS

Scholarships of up to \$10,000 are available to full-time or part-time allied health clinicians employed by and currently working in a rural public sector health service, to assist with educational expenses directly associated with postgraduate study.

<https://www.heti.nsw.gov.au/Placements-Scholarships-Grants/scholarships-and-grants/nsw-rural-allied-health-postgraduate-scholarships>

→ Contact: donna.fong@health.nsw.gov.au

UPCOMING WEBINAR THURSDAY 26 FEBRUARY 2026: “GENOMICS IN FOCUS: ALZHEIMER DISEASE”



The Centre for Genetics Education (CGE), HETI will be delivering a webinar on the emerging role of genomics in Alzheimer Disease. This webinar is aimed at geriatricians and neurologists and any healthcare professionals working in Alzheimer Disease including medical officers, nurses and allied health clinicians.

Join geriatrician Associate Professor Paul Yates and Neurologist Associate Professor Emma Devenney as they discuss the role of genomic testing in the diagnosis and treatment of Alzheimer Disease and share practical guidance and insights about genomics in clinical practice. Learn about new treatments that slow the progression of Alzheimer Disease and the role of genetic testing in identifying patients who have an increased chance of severe side effects to these medications.

Genomics in Focus aligns with the NSW Genomics Strategy to support upskilling of the NSW Health workforce with emerging roles in genomic healthcare delivery. Recordings of past webinars and links to register for upcoming webinars can be found on the [CGE website](#).

→ Contact: cassandra.mcdonald@health.nsw.gov.au

NEW GRADUATE NURSING AND MIDWIFERY RURAL SUPPORT INCENTIVE

OPEN 2 FEBRUARY, CLOSE 2 APRIL 2026

The New Graduate Nursing and Midwifery Rural Support Incentive is available to new graduate nurses and midwives relocating to take up employment in identified rural or remote Local Health District (LHD) locations. The applicants can apply for a support incentive of \$1,000 to support their relocation.

<https://www.heti.nsw.gov.au/Placements-Scholarships-Grants/scholarships-and-grants/new-graduate-nursing-and-midwifery-rural-support-incentive>

→ Contact: donna.fong@health.nsw.gov.au

NSW RURAL ALLIED HEALTH UNDERGRADUATE SCHOLARSHIPS

To maintain and improve the health status of rural communities, the NSW Rural Allied Health Undergraduate/Entry Level Scholarships have been established to assist NSW students enrolled in the second last or final year of an **Undergraduate** or Entry Level course of the [23 Allied Health professions](#) that are supported in the program.

OR

Either year of a **Masters (entry level) course** in any of the above Allied Health disciplines. Applicants will also be considered if the study load varies in a Masters degree.

<https://www.heti.nsw.gov.au/Placements-Scholarships-Grants/scholarships-and-grants/nsw-rural-allied-health-undergraduate-scholarships>

→ Contact: donna.fong@health.nsw.gov.au

NSW RURAL ALLIED CLINICAL PLACEMENT GRANTS

NSW Rural Allied Health Grants provide financial assistance to:

- Both rural and metro allied health students for travel and accommodation costs associated with rural clinical placements; and
- Allied health students from a rural or remote background studying at rural universities for travel and accommodation costs associated with metropolitan clinical placements.

<https://www.heti.nsw.gov.au/Placements-Scholarships-Grants/scholarships-and-grants/nsw-rural-allied-health-clinical-placement-grants>

→ Contact: donna.fong@health.nsw.gov.au

DIPLOMA OF NURSING RURAL TRAVEL SUPPORT INCENTIVE

OPEN 2 FEBRUARY, CLOSE 2 APRIL 2026

The Travel Support Incentive aims to increase opportunities for individuals to undertake a Diploma in Nursing by supporting the cost of travel to a recognised Registered Training Organisation (RTO) that is 100km (one way) or greater from their residential address.

The applicant can apply for a travel incentive of \$5,000 and use the funds for associated travel and accommodation costs related to Diploma of Nursing studies.

<https://www.heti.nsw.gov.au/Placements-Scholarships-Grants/scholarships-and-grants/diploma-of-nursing-rural-travel-scholarship-incentive>

→ Contact: donna.fong@health.nsw.gov.au

GETTING STARTED IN MEDICINE SCHOLARSHIP FOR FIRST YEAR STUDENTS

OPEN 9 FEBRUARY, CLOSE 3 APRIL 2026

The Getting Started in Medicine Scholarship Program is open to medical students undertaking their first year of medicine at a NSW university medical school. Eligible applicants are encouraged to apply for a \$1500 scholarship to assist with relocation and support study commencement costs.

<https://www.heti.nsw.gov.au/Placements-Scholarships-Grants/scholarships-and-grants/getting-started-in-medicine-scholarship-for-first-year-students>

→ Contact: donna.fong@health.nsw.gov.au

RURAL ALLIED HEALTH ASSISTANT SCHOLARSHIP

OPEN 16 FEBRUARY, CLOSE 10 APRIL 2026

The Scholarship can assist NSW Health employees working in rural settings to upskill or retrain and/or new entrant individuals interested in gaining employment with NSW Health. The applicant can apply for a \$3,000 scholarship to complete the Allied Health Assistant or Pharmacy Assistant qualification and use funds for associated training fees, technology, travel, accommodation, or childcare expenses.

→ Contact: donna.fong@health.nsw.gov.au

SUPPORTING ENTRY INTO UNIVERSITY MEDICINE OR DENTISTRY PROGRAM SCHOLARSHIP (UCAT)

OPEN 16 FEBRUARY, CLOSE 17 APRIL 2026

This Scholarship aims to support entry-level students that intend to work in rural communities in the future. The Scholarship provides financial support (\$1200) to cover registration for a 2026 UCAT exam, assist with associated expenses such as travel to the exam and preparation for the exam (e.g. purchasing preparation materials).

→ **Contact:** donna.fong@health.nsw.gov.au

ROLLOUT OF THE NEW NSW HEALTH VIOLENCE PREVENTION AND MANAGEMENT (VPM) EDUCATION AND TRAINING PROGRAM

Violence prevention and management (VPM) training is a key requirement for NSW Health workers. Following the Improvement to Security in Hospitals Report (2020), VPM training has been reviewed and updated.

The new VPM education and training program includes clear learning pathways so workers can access training that reflects their level of exposure to occupational violence. All workers complete consistent foundational content, with additional learning scaled to determined exposure risk.

Six foundational eLearning modules produced by HETI contribute to a consistent statewide approach. Face-to-face workshop resources for trainers were also redeveloped in collaboration with members of the VPM Implementation Network. This group streamlined essential physical techniques to improve recall and ensure training provided is targeted, allowing more time to practice and apply knowledge gained from the eLearning modules.

Updated trainer resources are now available in the VPM Trainer Toolkit. This toolkit is accessed with Manager approval in My Health Learning. The Toolkit includes videos, guides, session plans, slide decks, scenarios and drill templates to support workshop delivery.

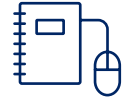


In partnership with the Ministry of Health (MoH) and with guidance from the VPM Education Advisory Group, HETI has developed a contemporary education and training program. Subject matter experts (SMEs) from local health districts (LHDs), specialty networks (SNs), other agencies and unions contributed to confirming training needs and ensuring alignment with chapter seven of the Protecting People and Property: NSW Health Policy and Standards for Security Risk Management in NSW Health Agencies.

HETI acknowledges the contribution of all Implementation Network members, subject matter experts, the MoH and NSW Health Pillar Partners. Phase 1 of the system rollout was completed in October 2025 and the scheduled rollout for Phase 2 will support a smooth transition to the new VPM program across LHDs and SNs. Phase 2 commences on 27 February 2026 with statewide data migration and targeting. Local targeting assignments and the retiring of historic VPM and EDVPM content is due for completion by the end of June 2026.

→ **Contact:** lucinda.matheson@health.nsw.gov.au

MY HEALTH LEARNING



NEW AND REVISED RESOURCES:

TITLE	COURSE CODE
Dataflow Catalogue Workbench View Only	642488058
Culturally Inclusive Care for Aboriginal People Living with Dementia (Refresh)	400643360
Let's Talk Disability (Rebuild)	67951622
Caring for Older Persons (Refresh)	196522698
Cognitive Disability and the Criminal Justice System (Refresh)	94996714
Hazardous Chemicals and Dangerous Goods (Refresh)	111702091
Disability Learning Navigator	636176544
Facilitation Essentials: Creating Safe and Inclusive Facilitation Practices	636244264
Facilitation Essentials: Foundations of Facilitation	636243164
Facilitation Essentials: Facilitation Skills in Action	636263732
Facilitation Essentials: Designing and Evaluating Facilitation Sessions	636272810
Facilitation Essentials: Introduction to Reflective Practice	636274716
Ask Away Series – Amy	475344043
Ask Away Series – Brent	475371272
Ask Away Series – Chantal and Sera	475350927
Ask Away Series – Des	475353614
Ask Away Series – Rob	475357934
Ask Away Series – Sam	475361761
Ask Away Series – Shane	515525935
Ask Away Series – Tiana & Nicole	515526237

→ Contact: Chitti.Taluri@health.nsw.gov.au

myhealthlearning.health.nsw.gov.au

TO BE THE FIRST-CHOICE PARTNER
FOR EDUCATION AND TRAINING IN
NSW HEALTH