

HETI SENIOR EXECUTIVE FORUM REPORT

MARCH 2024



*Intellectual Disability
Fundamentals: An inclusive approach to health
care delivery a new eLearning Pathway, delivers
inclusive, person-centred services to people
with intellectual disability.*

ENHANCING SKILLS AND CONFIDENCE IN DELIVERING INCLUSIVE HEALTH CARE FOR PEOPLE WITH INTELLECTUAL DISABILITY

A new eLearning Pathway [Intellectual Disability
Fundamentals: An inclusive approach to health care
delivery](#) (Course Code: 507546397) was developed by the Council for Intellectual Disability (CID) and is available on HETI My Health Learning. Nine (9) eLearning modules offer comprehensive training for NSW Health staff to deliver inclusive, person-centred services for people with intellectual disability.

The pathway aims to:

- Increase the knowledge, skills and confidence of health professionals to work with people with intellectual disability.
- Improve health services and health outcomes for people with intellectual disability.

The training raises awareness and provides strategies about the importance of communicating effectively and implementing reasonable adjustments to ensure health services are delivered equally. In line with the recommendations put forward by the Disability Royal Commission, the modules improve access to specialist training and continuing professional development in cognitive disability health care.

→ Contact: daniella.pfeiffer@health.nsw.gov.au

UPSKILLING ALLIED HEALTH STAFF THROUGH THE WORKPLACE LEARNING (WPL) GRANT PROGRAM

The WPL Program is delivered annually by the HETI allied health team. In 2022/23, 127 applications were funded across both Program streams which enabled 4648 allied health professionals/assistants to access locally driven, needs-based training.

WPL supports the implementation of evidence-based interventions with client groups, and the incorporation of new techniques into existing treatment practices across whole districts. For example, the delivery of a Stroke Rehabilitation Workshop in SNWLHD, focussed on ways to improve movement in people with stroke and acquired brain injury.

As a result of the training:

- 99% of participants felt able to describe evidence-based interventions and apply knowledge to improve movement in people with stroke and acquired brain injury.
- 73% felt confident in their ability to implement evidence-based coaching principles to optimise people's skill acquisition.

The Program enables access to education and training for allied health professionals and assistants that builds local capability through the development of work-specific knowledge and skills.

→ Contact: mary.jackson@health.nsw.gov.au

REPRODUCTIVE CARRIER SCREENING WEBINAR - UPSKILLING NSW HEALTH WORKFORCE IN GENOMICS



The Centre for Genetics Education, HETI will be delivering the *Genomics in Focus: Reproductive Carrier Screening* [webinar](#) on Thursday 7 March 2024. This initiative aligns with the NSW Genomics Strategy to support the upskilling of the NSW Health workforce in genomics healthcare delivery. This webinar is aimed at NSW Health professionals who work with individuals and couples planning a pregnancy or in the early stages of pregnancy.

In this webinar, expert Dr Nasrin Javid will share practical guidance around having detailed conversations about Reproductive Carrier Screening (RCS) with patients, types of RCS tests available and possible results, practicalities for ordering and considerations for genomic consent. Dr Javid is a midwife with more than 25 years of experience and is an investigator on several research studies on reproductive genomics including Mackenzie's Mission. For more information available visit: <https://www.genetics.edu.au/SitePages/Webinarseries.aspx?web=1>

→ Contact: cassandra.mcdonald@health.nsw.gov.au

DIAGNOSTIC IMAGING MEDICAL PHYSICS REGISTRAR TRAINING PROGRAM SUPPORTS TEAP EXAM PREPARATIONS

The HETI Diagnostic Imaging Medical Physics (DIMP) Training Program provides support for registrars enrolled in the Australasian College of Physical Scientists in Medicine's (ACPSEM's) DIMP Training, Education and Assessment Program (TEAP) and for their supervisors.

Significant recent achievements include:

- Delivery of a one-day workshop on non-ionising radiation safety covering diagnostic ultrasound, magnetic resonance imaging and laser safety. Six of a possible eight registrars attended. This included lectures and interactive tutorials and exercises. Post workshop evaluation showed the workshop met or exceeded the expectations of the attendees and increased their knowledge of the material covered in the workshop.
- Continuation of mock oral examination sessions which provide personalised suggestions for improvement for TEAP registrars in their third year of training to assist with preparation for their oral exam. Two mock examination sessions have been performed since November 2023 with a further two planned for the first half of 2024. Feedback received indicates these have been of great assistance with oral exam preparation.
- Focussed refresher tutorial sessions for the TEAP written exam for registrars preparing to sit their written TEAP exam at the end of February 2024. These build on the in-depth series that was delivered in 2023.

DIMP TEAP supervisor education and support sessions are being developed as a focus for the first half of 2024. An initial meeting with interested supervisors to discuss and plan future activities was held in February 2024.

→ Contact: andrew.campbell3@health.nsw.gov.au

FACILITATING THE PROVISION OF RURAL AND REGIONAL HEALTH SCHOLARSHIPS

NSW RURAL ALLIED HEALTH POSTGRADUATE SCHOLARSHIPS

OPEN 22 JAN 2024 TO 5 APR 2024

Scholarships of up to \$10,000 are available to fulltime or part time allied health clinicians employed by, and currently working in, a rural located public health service, to assist with educational expenses directly associated with postgraduate study.

<https://www.heti.nsw.gov.au/Placements-Scholarships-Grants/scholarships-and-grants/nsw-rural-allied-health-postgraduate-scholarships>

NSW RURAL ALLIED HEALTH UNDERGRADUATE SCHOLARSHIPS

OPEN 22 JAN 2024 TO 5 APR 2024

Rural Allied Health Undergraduate Scholarships are offered to students from a rural background undertaking "entry level" studies in allied health (leading to a degree that qualifies the student to practice). Up to 20 NSW Rural Allied Health Scholarships, valued up to \$10,000, are offered each year.

<https://www.heti.nsw.gov.au/Placements-Scholarships-Grants/scholarships-and-grants/nsw-rural-allied-health-undergraduate-scholarships>

NSW RURAL ALLIED HEALTH CLINICAL PLACEMENT GRANTS

OPEN 22 JAN 2024 TO 5 APR 2024

NSW Rural Allied Health Clinical Placement Grants provide financial assistance to both rural and urban allied health students with the travel and accommodation costs of rural clinical placements. Placement grants of up to \$750 (or \$1,000 for placements at Broken Hill) are offered each semester. Grants are awarded on the basis of the duration of the placement and the cost of travel associated with accessing the placement.

<https://www.heti.nsw.gov.au/Placements-Scholarships-Grants/scholarships-and-grants/nsw-rural-allied-health-clinical-placement-grants>

NEW GRADUATE NURSING AND MIDWIFERY RURAL SUPPORT INCENTIVE

OPEN 29 JAN 2024 TO 24 MAY 2024

The New Graduate Nursing and Midwifery Rural Support Incentive provides a one-off payment to support relocation costs for non-local graduate registered nurses and midwives seeking employment in rural LHD locations.

<https://www.heti.nsw.gov.au/Placements-Scholarships-Grants/scholarships-and-grants/new-graduate-nursing-and-midwifery-rural-support-incentive>

DIPLOMA OF NURSING RURAL TRAVEL SCHOLARSHIP INCENTIVE

OPEN 29 JAN 2024 TO 24 MAY 2024

The Travel Support Incentive aims to increase opportunities for individuals to undertake a Diploma in Nursing by supporting the cost of travel to a recognised Registered Training Organisation (RTO) that is 100km or greater from their residential address.

The applicant can apply for a travel incentive of \$5,000 and use the funds for associated travel and accommodation costs related to Diploma of Nursing studies.

<https://www.heti.nsw.gov.au/Placements-Scholarships-Grants/scholarships-and-grants/diploma-of-nursing-rural-travel-scholarship-incentive>

GETTING STARTED IN MEDICINE SCHOLARSHIP FOR FIRST YEAR STUDENTS

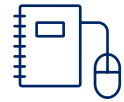
OPEN 5 FEB 2024 TO 12 MAY 2024

The Getting Started in Medicine Scholarship Program is open to medical students undertaking their first year of medicine at a NSW university medical school. Eligible applicants are encouraged to apply for a \$1,500 scholarship to assist with relocation and support study commencement costs.

<https://www.heti.nsw.gov.au/Placements-Scholarships-Grants/scholarships-and-grants/getting-started-in-medicine-scholarship-for-first-year-students>

→ Contact: donna.fong@health.nsw.gov.au

MY HEALTH LEARNING



NEW AND REVISED RESOURCES:

TITLE	COURSE CODE
Bloodsafe Iron Deficiency Anaemia: Intravenous Iron Administration	512619518
Oncology Basics	511956660
Introduction to Haematology and Blood and Marrow Transplantation	511973827
Privacy – It’s Yours to Keep (Refresh)	326771159
Family Centred Care (Refresh)	108353292
Post Incident Safety Huddles (Refresh)	221824316
Safe Sleep (Refresh)	136321254
Using a Zero Suicide Approach	507419227
Delirium Care (Refresh)	266621954
Research – Planning the Research Process (Refresh)	40027993

→ Contact: Chitti.Taluri@health.nsw.gov.au

myhealthlearning.health.nsw.gov.au

TO BE THE FIRST-CHOICE PARTNER
FOR EDUCATION AND TRAINING IN
NSW HEALTH