



# HETI SENIOR EXECUTIVE FORUM REPORT

NOVEMBER 2023



Attendees enjoyed networking and connecting with each other while exploring the impact of Artificial Intelligence on humanity, healthcare delivery and leadership.

## LEADERSHIP QUARTER-ARTIFICIAL INTELLIGENCE

*“Artificial Intelligence is, after all, Human” Maia Gould (Cybernetic Engagements Lead, Australian National University, Guest Speaker, Leadership Quarter 2023)*

What will be the impact of Artificial Intelligence on humanity, healthcare delivery and leadership over the next decade? This was the primary question 140 leaders at HETI’s Leadership Quarter series explored throughout the day-long event on October 12.

Being the first face-to-face gathering since 2019, attendees enjoyed networking and connecting with each other and the ideas presented. Guest speakers, Maia Gould (Cybernetic Engagements Lead, School of Cybernetics, Australian National University) and Dr. Phillip Gould (First Assistant Secretary, Health Economics and Research Division, Australian Department of Health and Aged Care), encouraged leaders to step back and take a systemic approach to navigating the change that will occur by considering different perspectives; noticing what happens over time; exploring how components are connected and examining the impact and purpose of the system.

The speakers emphasised the need to test extensive data sets with key stakeholder groups. For instance,

discussions with representatives from diverse cultural and linguistic backgrounds unveiled the reasons behind the low vaccine uptake among Chinese students residing in urban areas. These conversations revealed that most of these individuals were international students who had gone back to their home countries at the beginning of the pandemic. It became clear that human involvement is crucial in overseeing, directing, testing, and evaluating the available technology.

Participants also had an opportunity to explore topics such as ‘Emotional Intelligence meets Artificial Intelligence’; ‘Creating a Governance Framework for AI in Healthcare’; ‘Embracing Digital Workers’, and interact with robots and Chat GPT in breakout sessions across the day.

The event wrapped up with an engaging panel discussion involving Jo Blackwell (Executive Director, Workplace Relations, Ministry of Health), Mona Thind (Director of Digital Strategy, eHealth NSW), and Associate Professor Sandeep Reddy (Director MBA (Healthcare Management) Program, Deakin University). They delved into the support for the implementation of these technologies within NSW Health. They also highlighted that despite the term ‘Artificial Intelligence,’ the true advantage lies in ‘Augmented Intelligence’—the synergy between human and AI capabilities compared to either one in isolation, leading to improved health outcomes for patients.

Feedback from the event was overwhelmingly positive, with an 'Excellent' Net Promoter Score and participants commenting;

*"Great event. Very engaging and very informative." and a "Great day. I am so glad I attended this. I have been sharing anecdotes with my colleagues all day today."*

The third and final Leadership Quarter Event for 2023 "Embracing Indigenous Ways of Knowing and Doing Leadership" was held virtually on November 8. Guest speakers included Associate Professor Michelle Dickson (Director, The Poche Centre for Indigenous Health, University of Sydney) and Troy Pietsch (Lead Aboriginal and Torres Strait Islander Workforce Strategy, NSW Department of Education).

→ Contact: [nicole.baker@health.nsw.gov.au](mailto:nicole.baker@health.nsw.gov.au)

## NSW RURAL GENERALIST MEDICAL TRAINING PROGRAM

### 2024 FOUNDATION YEAR RECRUITMENT



The NSW Rural Generalist Medical Training Program (RGTP) Foundation Year is the earliest entry point to the RGTP supported training pathway for junior doctors wishing to pursue a career as a rural general practitioner providing primary care within a community general practice setting as well as advanced services/and or procedural skills within a rural hospital.

Foundation Year provides trainees with career planning and navigation, mentoring and education opportunities.

Applications are open from 1 November 2023 to 21 January 2024. Applicants must be junior medical officers currently PGY1 and above.

For more information on eligibility and application, visit the HETI website

→ Contact: [Karen.Beattie1@health.nsw.gov.au](mailto:Karen.Beattie1@health.nsw.gov.au)

## END OF LIFE CARE LEARNING NAVIGATOR LAUNCHED IN MY HEALTH LEARNING



The End of Life Care Learning Navigator has been developed and launched in My Health Learning to support the professional and development needs of NSW Health clinicians.

The End of Life Care Learning Navigator Tool offers simple and clear clusters of learning for medical, nursing and allied health professionals to support professional development and enhance practice capability.

Individuals can identify and select learning resources according to their interest or need and learn at their own pace.

Targeted consultation with key stakeholder committees and groups was undertaken with a survey allowing for stakeholder feedback. The End of Life Care Learning Navigator is based on four practice capability domains: Patient Centred Communication & Shared Decision Making, Teamwork & Coordination of Care, Components of Care, and Wellbeing & Self Care.

The End-of-Life Care Learning Navigator will reflect the most current best practice information through continuous additions and updates.

→ Contact: [carmelle.moses@health.nsw.gov.au](mailto:carmelle.moses@health.nsw.gov.au) and [therese.mccarthy@health.nsw.gov.au](mailto:therese.mccarthy@health.nsw.gov.au)

## DIAGNOSTIC IMAGING MEDICAL PHYSICS

### REGISTRAR TRAINING PROGRAM

The HETI Diagnostic Imaging Medical Physics (DIMP) Training Program provides support for registrars enrolled in the Australasian College of Physical Scientists in Medicine's (ACPSEM's) DIMP Training, Education and Assessment Program (TEAP) and for their supervisors. A new expert Training Coordination team commenced in March 2023 and their focus to date has been on providing targeted training and support for registrars in the second and third years of the program.

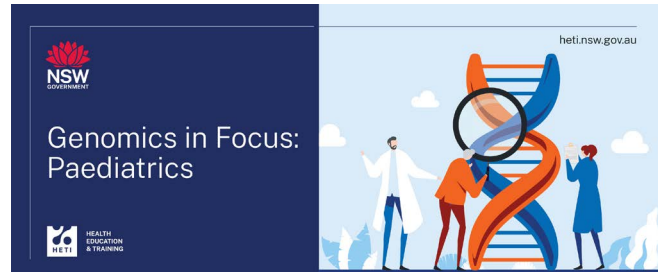
Significant achievements have been:

- Facilitation of the delivery of a two-session "Writing for Publication" workshop for TEAP registrars in their third year of training, with five of a possible five registrars attending.
- Conducting mock oral examination sessions for TEAP registrars in their third year of training to assist with preparation for their oral exams. Three sessions have been delivered since July 2023 with a further two sessions planned for November.
- Delivery and facilitation of a tutorial series for TEAP registrars in their second year of training to assist with preparation for a high stakes TEAP written examination. The series was delivered between July and September, with six separate tutorials in each of the diagnostic radiology physics and nuclear medicine physics speciality areas. Evaluation conducted during and after the series indicated that registrars increased their: knowledge of topic areas, confidence in answering questions, understanding of the style of questions likely to be encountered, and the marking approach. All respondents identified that the tutorial series had met or exceeded their expectations, and all would recommend the tutorial series to future registrars.

Future workshops on ultrasound, laser and MRI safety are being planned to meet the learning outcomes in the DIMP TEAP program for these areas. DIMP TEAP supervisor education and support sessions are being developed for commencement early in 2024.

→ Contact: [andrew.campbell3@health.nsw.gov.au](mailto:andrew.campbell3@health.nsw.gov.au)

## CENTRE FOR GENETICS EDUCATION



### GENOMICS IN FOCUS: PAEDIATRICS WEBINAR

The Centre for Genetics Education, HETI will be delivering the 'Genomics in Focus: Paediatrics' webinar on Thursday 7 December 2023. This is a new initiative that aligns with the NSW Genomics Strategy to support upskilling of the NSW Health workforce in genomics healthcare delivery. This webinar is aimed at paediatricians and professionals who work with children with a rare or genetic condition or intellectual disability.

In this webinar, expert Dr Con Papadopoulos will share practical guidance around ordering genetic tests, identifying patients who may benefit from testing, consent and other considerations. Dr Con Papadopoulos is a general and developmental paediatrician, and director of the Child Development Service at Royal North Shore Hospital, a tertiary diagnostic service for children with emerging disabilities.

→ Contact: [Thulasee.sriganeshan@health.nsw.gov.au](mailto:Thulasee.sriganeshan@health.nsw.gov.au)

## UNLOCK POTENTIAL WITH THREE HIGHER EDUCATION SCHOLARSHIPS

These HETI Higher Education scholarships enable NSW Health staff to pursue mental health higher education without the financial burden of course costs.

### 1. ADULT MENTAL HEALTH SCHOLARSHIP

- The scholarship will enable students to complete either the Applied Mental Health Studies (AMHS) Graduate Certificate, Graduate Diploma or Masters course, specialising in Adult Mental Health.
- Amount: up to the value of 600 hours (one degree level)
- To apply visit <https://www.heti.nsw.gov.au/Placements-Scholarships-Grants/scholarships-and-grants/adult-mental-health-scholarship> for more details and guidelines

### 2. OLDER PEOPLE'S MENTAL HEALTH SCHOLARSHIP

- The scholarship will enable students to complete either the Applied Mental Health Studies (AMHS) Graduate Certificate, Graduate Diploma or Masters course, specialising in Older People's Mental Health.
- Amount: up to the value of 600 hours (one degree level)
- To apply visit <https://www.heti.nsw.gov.au/Placements-Scholarships-Grants/scholarships-and-grants/older-peoples-mental-health-services-scholarships> for more details and guidelines

### 3. CHILD AND YOUTH MENTAL HEALTH SCHOLARSHIP

- The scholarship will enable students to complete either the Applied Mental Health Studies (AMHS) Graduate Certificate, Graduate Diploma or Masters course, specialising in Child and Youth Mental Health or Perinatal and Infant Mental Health.
- Amount: up to the value of 600 hours (one degree level)
- To apply visit <https://www.heti.nsw.gov.au/Placements-Scholarships-Grants/scholarships-and-grants/child-and-adolescent-mental-health-services> for more details and guidelines

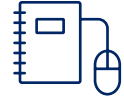
### 4. PROFESSIONAL DEVELOPMENT MENTAL HEALTH SCHOLARSHIP

- The scholarship will enable students to complete single units within Applied Mental Health Studies (AMHS) for professional development.
- Amount: up to the value of 150 hours and utilised within six months
- To apply visit <https://www.heti.nsw.gov.au/Placements-Scholarships-Grants/scholarships-and-grants/professional-development-mental-health-scholarship> for more details and guidelines

Note: these scholarships are allocated until funds are exhausted.

→ Contact: [support@heti.edu.au](mailto:support@heti.edu.au)

# MY HEALTH LEARNING



## NEW AND REVISED RESOURCES:

TITLE	COURSE CODE
End of Life Care Learning Navigator	489456659
Growing as an Allied Health Clinical Supervisor (Refresh)	396460713
Interpreting in Family Conferences (Refresh)	176822249
Interpreting in mental health interviews (Refresh)	184028031
Introduction to Work, Health and Safety for Managers (Refresh)	39980660
Mandatory training to become an authorised voluntary assisted dying practitioner - Exam	487901749
Mandatory training to become an authorised voluntary assisted dying practitioner - Online	482802408
Mandatory training to become an authorised voluntary assisted dying practitioner - Pre-reading	487901746
Module 1: What is disability?	496606520
Module 2: Diverse perspectives on disability	496608083
Module 3: Creating an enabling and inclusive workplace	496651624
Module 4: Creating a positive employment experience	496654352
Module 5: Your words and actions matter	496654871
My Professional Development: A Compass for Allied Health (Refresh)	392571085
Nursing in emergency care settings	493013476
Patient Identification and Procedure Matching (Refresh)	45833329
Perform better at interview (Refresh)	276239166
Telephone Interpreting (Refresh)	184024728

→ Contact: [Chitti.Taluri@health.nsw.gov.au](mailto:Chitti.Taluri@health.nsw.gov.au)

[myhealthlearning.health.nsw.gov.au](http://myhealthlearning.health.nsw.gov.au)

TO BE THE FIRST-CHOICE PARTNER  
FOR EDUCATION AND TRAINING IN  
NSW HEALTH