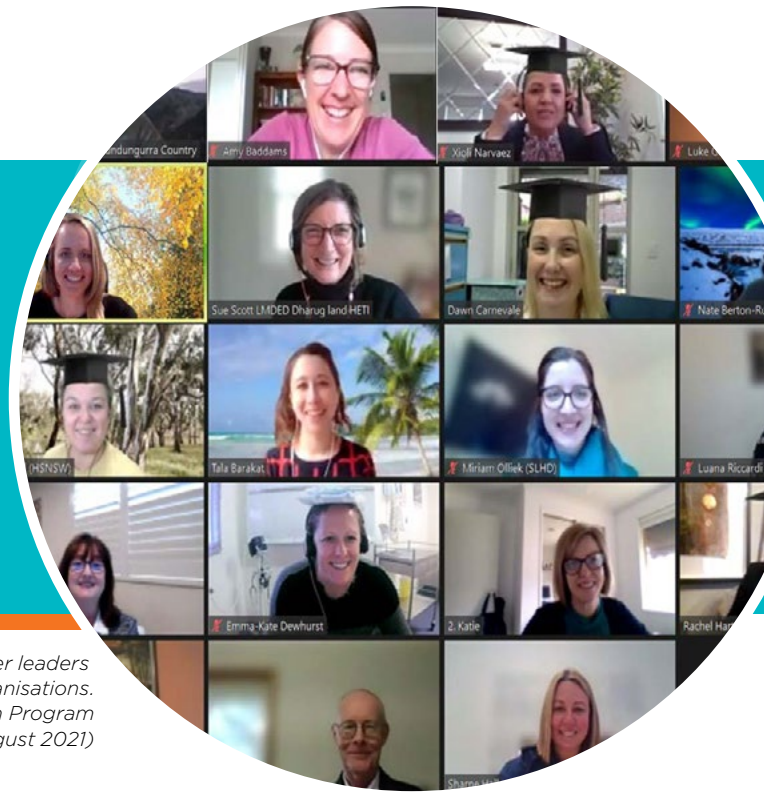


SENIOR EXECUTIVE FORUM REPORT



Our third cohort of early career leaders from local NSW health organisations. (Photo was taken at the Next Gen Program Graduation 24, August 2021)

BUILDING RESILIENCE AND CRITICAL THINKING WITH NEXT GEN LEADERS AND MANAGERS

Cohort three of the *Next Generation of Leaders and Managers within NSW Health Program* (program) celebrated their virtual graduation on 24 August 2021.

In a time of turbulence and change, participants and the HETI program faculty effectively adapted to virtual delivery as COVID-19 restrictions impacts were felt. The cohort displayed resilience through this change and provided evidence of the high quality of learning still possible through the virtual medium.

The 19 participants completed their national BSB51918 *Diploma of Leadership and Management* and the implementation of a Business Improvement Project (BIP) in their local organisation. The BIPs all reflected critical thinking and a value-add for their organisations and the broader community. A successful Aboriginal School-Based Apprenticeship and Traineeship program was one of the many high-quality projects.

Participants were supported by local line managers, sponsors, mentors and coaches and undertook developmental work placements. Our partner organisation in year 2 of the program, *Justice Health and Forensic Mental Health Network*, provided opportunities to contribute to innovative approaches to critical strategic issues facing the Network.

We wish our graduates well as they continue to apply their program learning and experiences to their professional practice and careers within NSW Health.

*“What this course has given me most is courage. Courage to be the best version of myself to manage others, support and mentor staff, and to lead with passion and sincerity.”
Sharne Hall, NSW Ambulance, Cohort Three program graduate 2021.*

→ **Contact:** HETI-NextGen@health.nsw.gov.au

MENTAL HEALTH PATHWAYS IN PRACTICE (MHPiP)



Mental Health Pathways in Practice (MHPiP) is an initiative of, and funded by, the Nursing and Midwifery Office. The HETI project team is responsible for the development of these learning resources with three of the four pathways now live on My Health Learning. The HETI MHPiP project team are busy with the production of the final Pathway 4. Activities have been written, filming has commenced and our content writers are prepped and ready to start writing. Pathway 4 is due to go live in late-November 2021.

To date, feedback on the program has been positive. From those involved in its inception and production we have heard comments such as:

“MHPiP has the potential to completely change the culture of mental health”

“Really great job with a huge amount of content that has come together really well. Their effect will be positive throughout NSW”

The second evaluation report has just been received and the response from participants has been overwhelmingly positive; one standout statistic from the report is that 70% of participants said MHPiP made them feel more positive about their work.

Other comments from participants identified the best thing about the program as:

“Gaining knowledge from those who have done the hard work, experienced the problems and given insight into strategies which could be implemented”

“Gaining the confidence to ask questions around choices in care provided.”

Julie Panagiris from HETI’s MHPiP team notes that “As Pathway 3 has only just been released and with Pathway 4 coming in November, this is only the beginning of the positive effects MHPiP will bring to mental health.”

→ **Contact:** Ashleigh.Boyle1@health.nsw.gov.au

HETI HIGHER EDUCATION TRAUMA-INFORMED CARE AND PRACTICE SCHOLARSHIPS

The Agency for Clinical Innovation (ACI) has partnered with the Health Education and Training Institute Higher Education (HETI HE) to offer scholarships to support NSW Health Mental Health Services and clinicians working with vulnerable populations to receive targeted trauma-informed care training. In the first round, scholarships were awarded to 61 health employees, an outstanding result.

Trauma-informed care is a re-conceptualisation of traditional approaches to health and human service delivery, where all aspects of services are organised around an acknowledgement of the prevalence of trauma throughout society, including the lives of people who access mental health services. ACI is committed to upskilling the Mental Health workforce in trauma-informed care to create improved outcomes and care for consumers within our public health networks. HETI HE has developed the unit to meet workforce needs and looks forward to working with the new scholarship recipients. The unit started on 6 September 2021, led by the Unit Facilitator Dr Alison Ryder.

→ **Contact:** Alison.Ryder@health.nsw.gov.au

2022 RURAL RESEARCH CAPACITY BUILDING PROGRAM - NOW OPEN!

Applications for the 2022 Rural Research Capacity Building Program are now open and will close on 31 October 2021. Previous Programs have been very competitive with many high-quality proposals covering a breadth of valuable research topics. This two-year experiential learning research education program is based around a capacity building framework. Workshops, teleconferences and mentoring support the novice researcher candidates through the learning process.

It is highly recommended that interested and eligible rural NSW Health staff discuss their research ideas with their Local Health District or NSW Health agency, HETI Rural Research Education Managers, or graduates of the program.

→ **Contact: David.Schmidt@health.nsw.gov.au and Kerith.Duncanson@health.nsw.gov.au**

NextRG DATABASE LAUNCH

The NSW Rural Generalist Medical Training Program (RGTP) has launched its NextRG database.

The database solution was a successful collaboration between HETI and eHealth. It has resulted in a new workflow environment for the management of the RGTP, as well as the Rural Junior Doctors Training Innovation Fund Program and the General Practice Procedural Training Program (GPPTP). The database will assist with accurate and timely communication, tracking and support the careers of trainees working in rural and remote communities throughout NSW.

→ **Contact: Rodney.Peadon@health.nsw.gov.au**

TRANSITION TO INDEPENDENT PRACTICE WEBINAR SERIES

The NSW Rural Generalist Medical Training Program (RGTP) team is delivering a webinar series for trainees completing their Advanced Skills Training and preparing to undertake General Practice training in rural communities. The five-part webinar series commenced in August 2021, focusing on a range of topics such as choosing a rural practice; financial management; working in small rural and remote communities, and transition to independent practice, with the final session to be facilitated by the NSW Rural Doctors Network.

→ **Contact: Rodney.Peadon@health.nsw.gov.au**

MY HEALTH LEARNING

New and revised resources:



Title	Course code
Assessing the need for an Interpreter (Refresh)	178399920
Business Writing in Healthcare (Refresh)	193770709
Central Venous Access Devices: the fundamentals (Refresh)	92708229
Collaborating in Teams	379731998
Collaborating with Carers and Families	379732302
Collaborating with Extended Networks and Other Organisations	374527710
Collaborating with other mental health professionals	379732178
Collaborating with Persons with Lived Experience	379731760
Collaborative Communication	379731670
Collaboratively Planning for Care	379732490
Comprehensive Assessment of a Well Newborn Video (Refresh)	180992758
COPSETI Module 2: Initial Assessment and Clinical Care of People Who May be Suicidal (Refresh)	144172009
Effective Workplace Conversations (Refresh)	39832364
End of Life Supportive Care (Refresh)	239708075
Face to face communication with interpreters (Refresh)	178758010
Facilitating Transitions of Care Across Time and Place	379732624
Hazardous Chemical Spills (Refresh)	219012451
Hazardous Drug Spills (Refresh)	219007052
How to Use electronic Transfer of Care (eTOC) Phase 1	383367688
Improvement Science Introduction	378584444
Infection Prevention and Control Practices (Refresh)	46777047
Interpreting in Family Conferences (Refresh)	176822249
Interpreting in mental health interviews (Refresh)	184028031
Introduction to Improvement Science - Phase Five - Sustaining and Spreading the Improvement	378586585
Introduction to Improvement Science - Phase Four - Measuring Impact	378586281
Introduction to Improvement Science - Phase One - Project Planning	378584865
Introduction to Improvement Science - Phase Three - Intervention / Testing Phase (PDSA)	378585668
Introduction to Improvement Science - Phase Two - Diagnostic	378585229
Introduction to Pathway 3 - Working Collaboratively	379731556

🔗 Introduction to the cobas Liat	383816748
🔗 Mandatory Training Challenge Test (Refresh)	134540431
🔗 Maternal Safety Education Team Training 1	371129443
🔗 Maternal Safety Education Team Training 2	371129503
🔗 Maternal Safety Education Team Training 3	371129690
🔗 Mental Health Pathways in Practice - Pathway 3: Working Collaboratively Facilitator Resources	379899639
🔗 Project Management in a Nutshell (Refresh)	40017593
🔗 Readiness to Lead for Safety and Quality - Am I Ready to Lead for Safety and Quality?	381396395
🔗 Readiness to Lead for Safety and Quality - Developing Self as a Leader for Safety and Quality	381396638
🔗 Readiness to Lead for Safety and Quality - Introduction	381398496
🔗 Readiness to Lead for Safety and Quality - Leadership Fundamentals	381398262
🔗 Readiness to Lead for Safety and Quality - The Role of the Team in Safety and Quality	381399559
🔗 Risks in using family to interpret (Refresh)	178402786
🔗 Telephone Interpreting (Refresh)	184024728
🔗 Week 10: Haematology 2, Pharmacology 1 & 2, Endocrine Histology and Physiology, Embryology	371950848
🔗 Week 6: Respiratory Physiology 1, 2 & 3 and Practical Pharmacology	371918146
🔗 Week 7: Respiratory Physiology 4 & 5 and Immunology 1 & 2	371944831
🔗 Week 8: Anatomy of the GIT, GIT Physiology 1 & 2, GIT Histology, Nutrition (TPN and Parenteral)	371946241
🔗 Week 9: Anatomy of the Kidneys & Ureters & Renal Histology, Liver segments, Radiology (Cancer and Trauma), Haematology 1	371949705
🔗 Working in Culturally Diverse Contexts (Refresh)	39962639

→ **Contact:** Chitti.Taluri@health.nsw.gov.au

myhealthlearning.health.nsw.gov.au

**TO BE THE FIRST-CHOICE PARTNER FOR
EDUCATION AND TRAINING IN NSW HEALTH**