

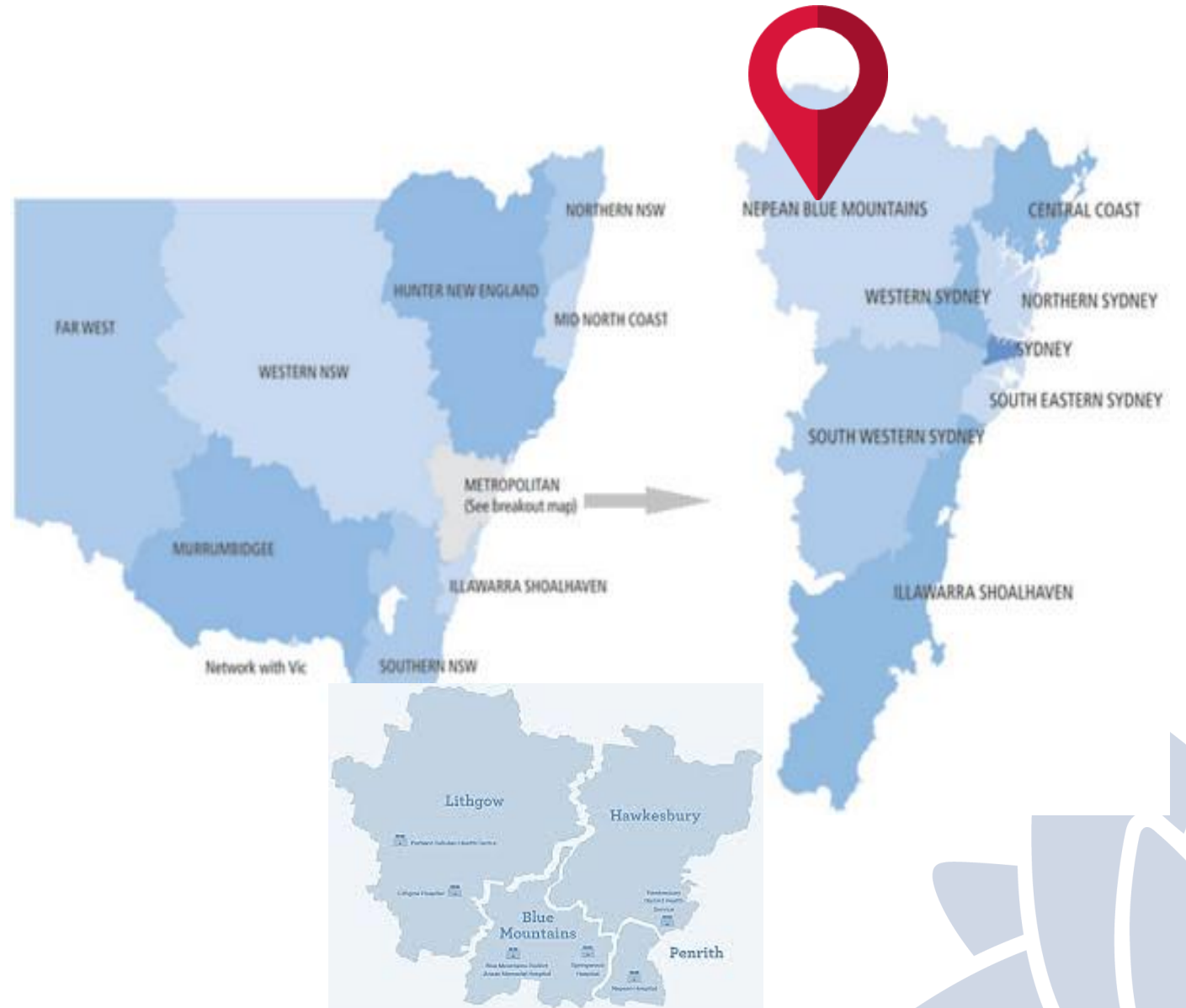
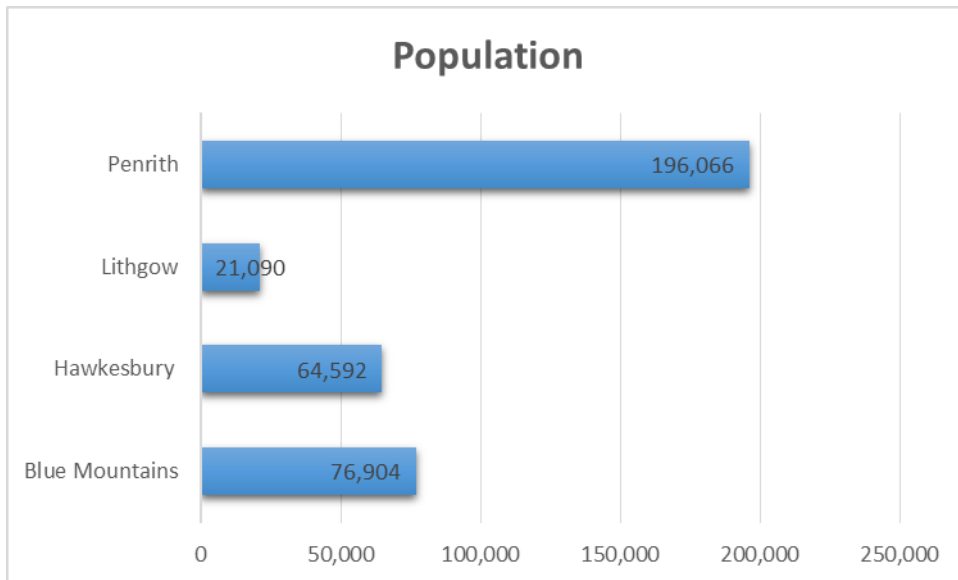
Network 14

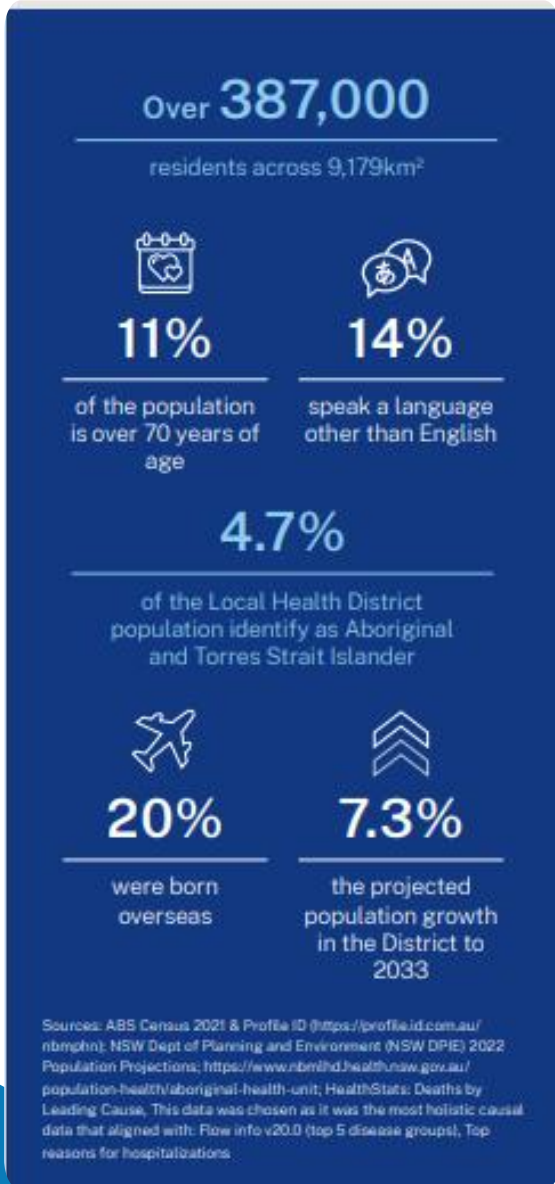
2025 Intern Program



Map

- The network encompasses 4 Local Government Areas as part of Nepean Blue Mountains Local Health District
- It is one of the 8 Sydney Metropolitan LHDs





Our Community

- ▶ We have over 380,000 residents with 4.7% of them identifying as Aboriginal and Torres Strait Islander.
- ▶ Several initiatives in our region will impact population growth and models of service delivery, now and into the future. This includes Western Sydney Aerotropolis, Sydney Science Park and The Quarter. The establishment of the Western Parkland City, part of the Western Sydney City Deal, will also improve infrastructure and liveability in the region

A Year of Activity

In 2022-2023 the Local Health District continued to deliver services to meet a growing population.



1,266,961
community and outpatient occasions of service
▼ DOWN 6.3%



139,924
presentations to the emergency department
▲ UP 6.6%



85,094
admissions to hospital
▼ DOWN 1.1%



4,434
babies born
▼ DOWN 10%



12,841
elective surgeries
▲ UP 46%



8,569
emergency surgical procedures
▲ UP 2.5%



177
research proposals

Clinical Support, Management, Admin and Miscellaneous



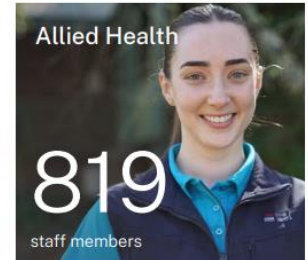
1,883
staff members

Medical



875
staff members

Allied Health



819
staff members

Oral Health



126
staff members

Nursing and Midwifery



3,362
staff members

Research/Academics



22
staff members

Our Staff





Blue Mountains District ANZAC Memorial Hospital is located between Leura and Katoomba and is an acute hospital that provides inpatient and outpatient services.

2020 marked the 95th anniversary of the laying of the Hospital's foundation stone and it is the only remaining ANZAC Memorial hospital in NSW.

There is a proud history of servicing the local community's health and wellbeing needs.



Health

Nepean Blue Mountains
Local Health District





Hawkesbury Hospital

Hawkesbury District Health Service is a teaching hospital in Windsor NSW, providing acute, community and allied health services for the local community and surrounding districts.

We provide 24-hour emergency, medical, surgical, diagnostic, maternity, neonatal, paediatric, palliative, intensive and coronary care services, and after hour GP services.

The 131-bed healthcare facility recently returned to NSW Health from St John of God so is undergoing some changes with this transition.



Health

Nepean Blue Mountains
Local Health District





Lithgow Hospital

is located in the historic township of Lithgow, one hour drive west of Penrith. It is a 46 bed public hospital that provides healthcare services to a rapidly expanding population in excess of 20 000 people.



Health

Nepean Blue Mountains
Local Health District





Nepean Hospital

- The new tower, delivered under Stage 1 of the Nepean Redevelopment, is one of the tallest hospital buildings in Australia – at more than 100 metres above sea level – with majestic views stretching to the Sydney CBD across to the Blue Mountains.
- The Stage 1 tower includes an expanded Emergency Department, 18 birthing suites, a Neonatal Intensive Care Unit, more than 16 operating theatres and more than 200 additional beds in contemporary and bright in-patient unit

Nepean Hospital

The NSW Government has committed \$450 million to deliver Stage 2 of the Nepean Redevelopment with construction currently underway on the Nepean Hospital campus.

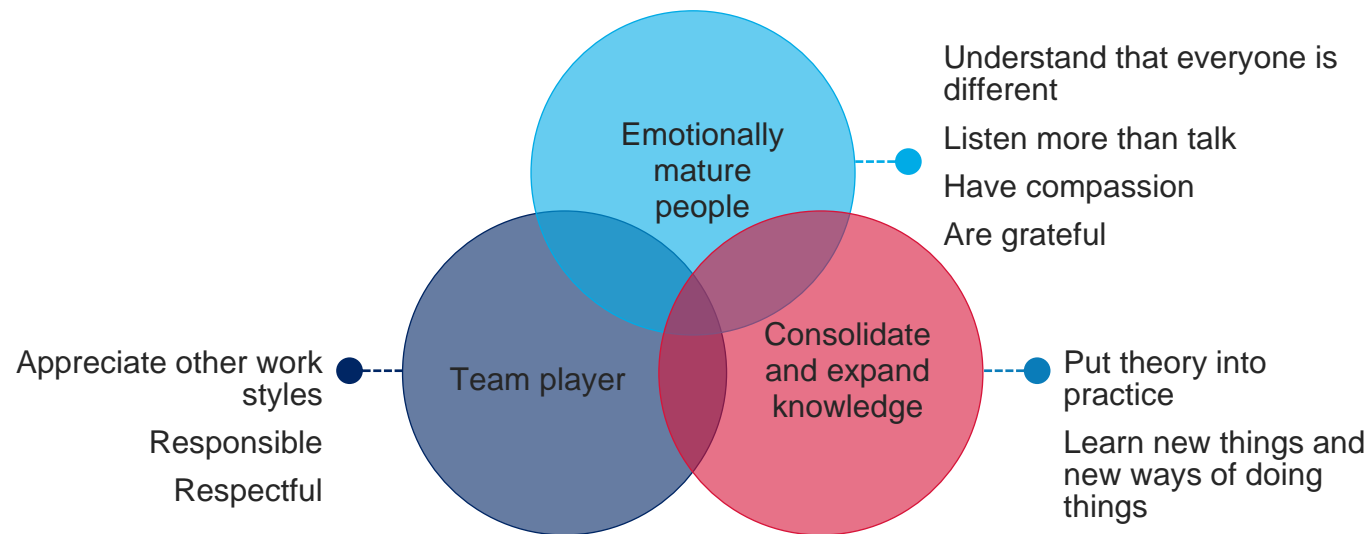
Stage 2 includes a new building that will seamlessly connect to the Stage 1 tower (Building A) and include:

- An Intensive Care Unit
- Medical imaging services and nuclear medicine
- An in-centre renal dialysis unit
- More in-patient beds including paediatrics
- Education and training facilities
- A new front of house and reception area



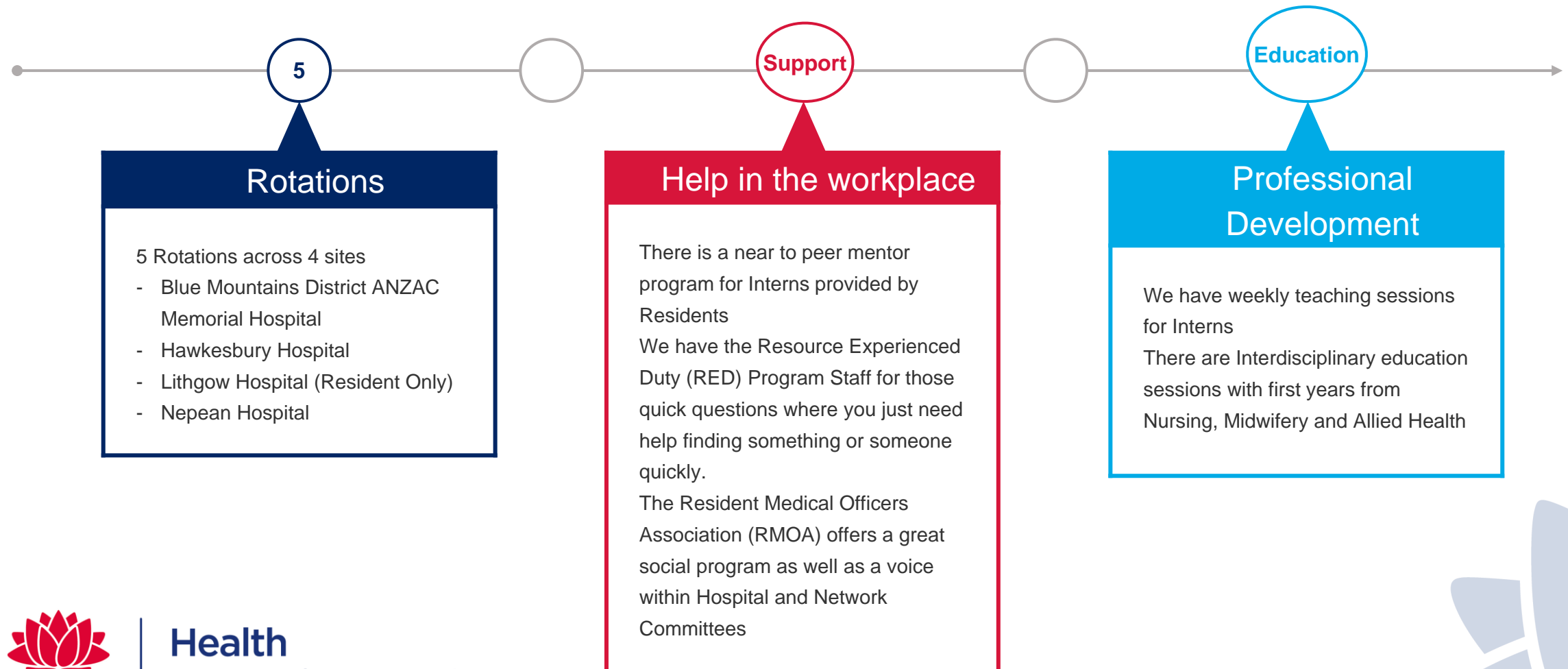
What are we looking for

The things we value are

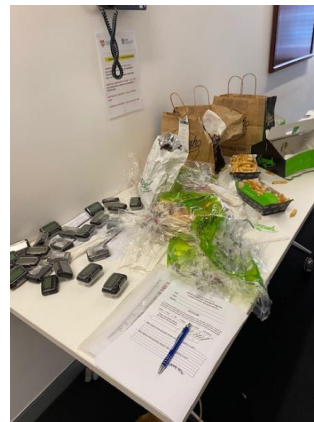


What are we offering

Our Network has



RMOA -
exec@nepeanrmoa.com



Network 14 Interns 2024

- These are our current Interns who started in January.
- This could be you in 2025!



Intern/ Resident Rotations available

MEDICAL

16

Cardiology, Drug & Alcohol, Endocrinology, Gastroenterology, General Medicine (BMDAMH & HH only), Geriatric Rehabilitation, Geriatrics, Haematology, Medical Assessment Unit, Neurology, Oncology/ Radiation Oncology, Palliative Care, Respiratory, Rehabilitation, Renal

SURGICAL

12

Acute Surgical Unit, Breast/ Endocrine, Colorectal, ENT, General Surgery (HH only), Neurosurgery, Orthopaedics, Plastics, Thoracics, Upper GI, Urology, Vascular

EMERGENCY

2

Hawkesbury Hospital
Nepean Hospital

Please note:
You can be allocated to complete one rotation off site at Blue Mountains District ANZAC Memorial Hospital or Hawkesbury Hospital



Health

Nepean Blue Mountains
Local Health District


Resident Only Rotations available



NEPEAN

6

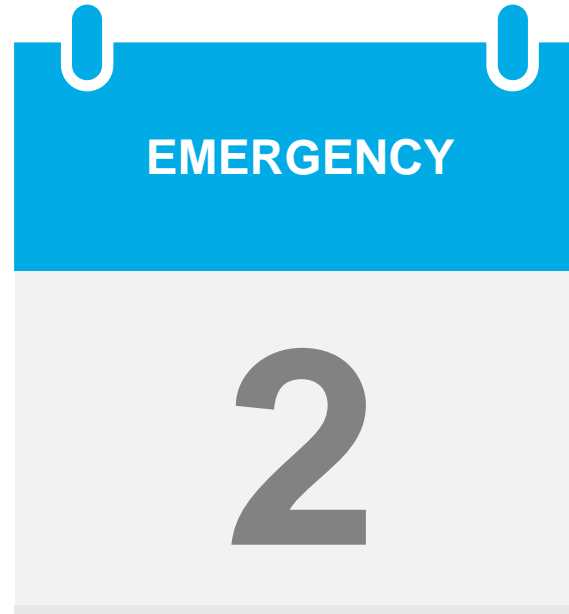
Critical Care, Infectious Diseases,
Paediatrics, Psychiatry, Obstetrics
& Gynaecology, Rheumatology/
Clinical Immunology



**BMDAMH
LITHGOW**

2

Rehabilitation (BMDAMH)
Rural Medicine (Lithgow)



EMERGENCY

2

Hawkesbury Hospital
Nepean Hospital

Please note:
You can be allocated
to complete one
rotation off site at
Blue Mountains
District ANZAC
Memorial Hospital,
Hawkesbury
Hospital or Lithgow
Hospital

Frequently Asked Questions

Can I do part time?

Contact Sharon Kuipers the JMO
Manager to discuss

Sharon.Kuipers@health.nsw.gov.au
or 4734 4367

How many intakes do you
have?

We have 1 intake in January

Who can I contact to discuss
further?

Sharon Kuipers, JMO Manager

Sharon.Kuipers@health.nsw.gov.au

4734 4367

Dr Karen Fisher, DPET

Karen.Fisher1@health.nsw.gov.au

How many Interns do you
employ?

We have 75 Intern positions in the 2024
Clinical year



Health

Nepean Blue Mountains
Local Health District



This is who we are

- Caring
- Positive
- Uplifting
- Patient-focused
- Driven by research
- Innovative
- Proven
- Local
- Safety-focused
- About people
- Respectful
- Educational

Consider joining us!

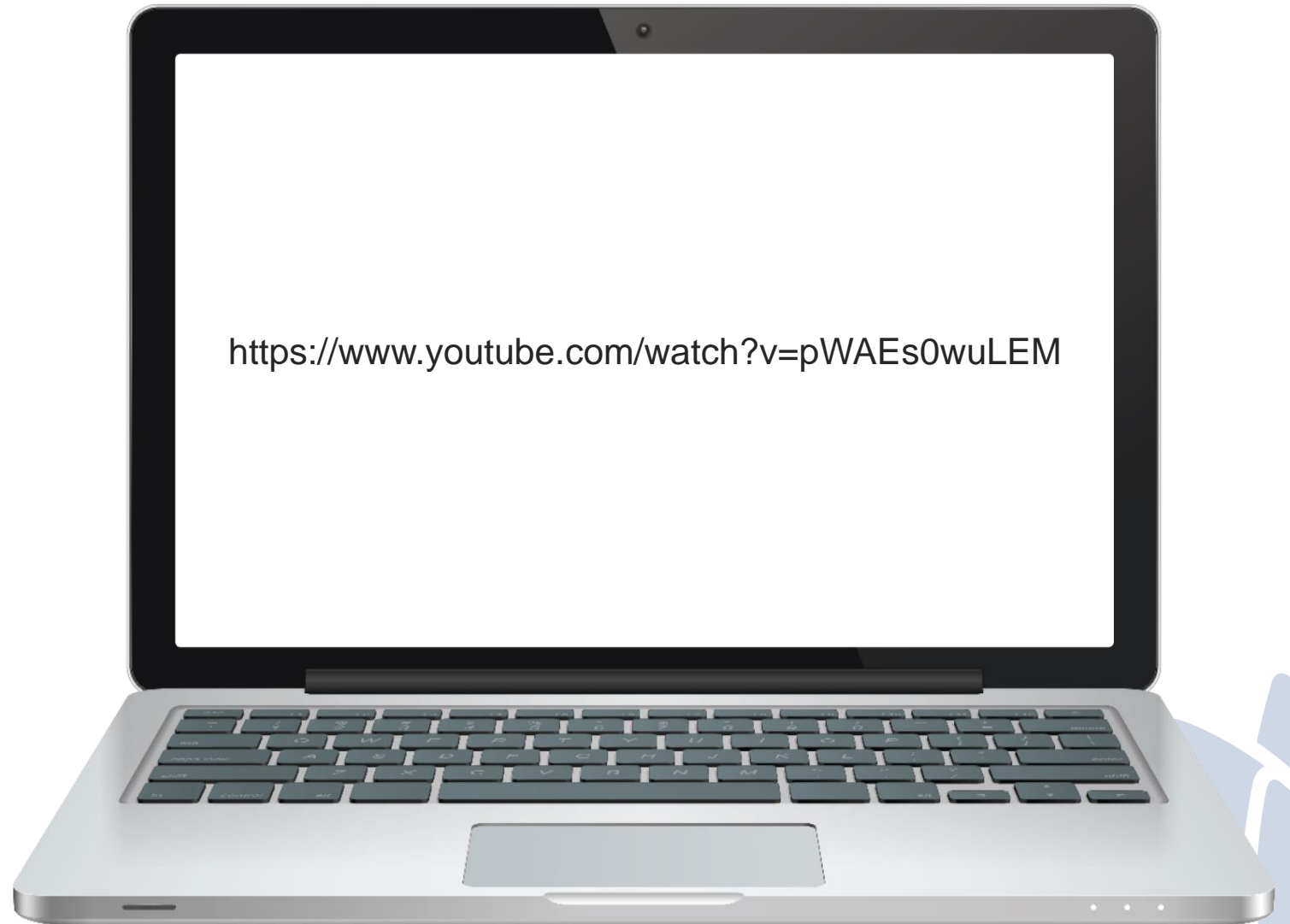


Health
Nepean Blue Mountains
Local Health District



At the end of the day ...

We think you should be happy



Health

Nepean Blue Mountains
Local Health District