

HETI SENIOR EXECUTIVE FORUM REPORT

JULY 2022



The 'Caring for people living with dementia' training program was a result of collaboration across pillar agencies, LHDs and not-for-profit organisations with a common goal – to support best practice in dementia care within NSW Health.

CARING FOR PEOPLE LIVING WITH DEMENTIA TRAINING PROGRAM IS NOW AVAILABLE IN MY HEALTH LEARNING.

The Learning Pathway consists of five resources that provide foundational knowledge about issues and processes underpinning human centred care for people living with dementia. The training package supports frontline NSW Health staff who care for people living with dementia, their carers and families.

The online modules use interactive activities and real-life videos to develop an understanding of the causes and types of dementia and the impact on the individual. The training includes the importance of an early diagnosis and how to recognise, investigate and support care needs associated with changed behaviour.

The training package is the outcome of key collaborative partnerships with multiple NSW Health system experts including the Health and Social Policy Branch of the Ministry of Health, Agency for Clinical Innovation, Clinical Excellence Commission and the many health district staff who were part of the subject matter expert group. HETI also collaborated with external partners including Dementia Australia, Canowindra Community Care, and Neuroscience Research Australia (NeuRA).

The eLearning solution built on the significant work completed by the former Dementia Care Competency and Training Network auspiced by the Northern NSW Local Health District.

→ **Contact:** Hasan.Chowdhury@health.nsw.gov.au

NSW RGTP TRANSITION TO INDEPENDENT PRACTICE WORKSHOP, 24 JUNE 2022

The NSW Rural Generalist Medical Training Program (NSWRGTP) delivered a Transition to Independent Practice Workshop in Sydney for sixteen doctors from across rural and regional NSW undertaking 2022 Advanced Skills Training posts in Emergency Medicine, Anaesthetics, Obstetrics, Paediatrics, Mental Health and Palliative Care.

The interactive program aimed to support the preparation of Advanced Skills trainees for transition to independent practice in a rural setting following completion of their advanced skill, incorporating professional development, career planning, networking, and peer support opportunities.

The workshop was supported by the NSW RGTP team, Rural Directors of Training and HETI Mobile Simulation Centre staff.

→ **Contact:** Karen.Beattie1@health.nsw.gov.au

OUTCOME OF THE 2022 HETI ALLIED HEALTH ASSISTANT SCHOLARSHIP PROGRAM

The HETI Allied Health Assistant Scholarship Program provides funding to support the training of NSW Health Allied Health Assistants (AHA) and Pharmacy Assistants and Technicians (PAT) seeking to further develop their knowledge and skills.

Funding was made available by both the Ministry of Health, Workforce Planning and Talent Development and HETI in 2022.

- 96 participants will be funded to complete a range of training courses delivered by TAFE NSW including 55 participants completing Cert IV Allied Health Assistance in the specialisations of Occupational Therapy, Physiotherapy (or both) and Nutrition and Dietetics, along with completions of these specialisations alone, or single units of competency alone.
- 41 Pharmacy Assistants and Technicians will be funded to complete the Cert IV Hospital Health Services Pharmacy Support.

→ **Contact:** Sue.Aldrich@health.nsw.gov.au

OUTCOME OF THE 2022 HETI PSYCHOLOGY SUPERVISION TRAINING EXPRESSION OF INTEREST (EOI)

Psychologists who supervise students, interns and registrars are required by the Psychology Board of Australia to complete mandated training by a board approved provider. HETI recently supported NSW Health Psychologists to apply for sponsorship to complete Board-Approved Psychology Supervision Training through an Expression of Interest (EOI). Two psychology training streams were offered:

- 59 participants were sponsored to complete the virtual Psychology Board of Australia Approved Full-training (for prospective supervisors to attain board-approved supervisor training status)
- 40 participants were sponsored to complete the virtual Psychology Board of Australia Approved Master Class (to maintain board-approved supervisor training status for a five-year period).

→ **Contact:** Sue.Aldrich@health.nsw.gov.au

OPENING OF THE 2022 ALLIED HEALTH WORKPLACE LEARNING PROGRAM

The Allied Health Workplace Learning (WPL) Program for 2022 will open on the 15 July and close on the 4 August 2022.

The WPL Program has two streams:

- The *Workplace Learning Professional Development Stream* supports workplace-based learning within Local Health Districts (LHD) and Speciality Health Networks (SHN). Grants are prioritised by Allied Health Directors based on local priorities.
- The *Cross Boundary Grant Stream* supports professional development training opportunities for groups of allied health across districts - from more than one LHD or SHN.

Notification of successful grants expected in October 2022. Information is available on the **HETI website**.

→ **Contact:** Sue.Steelesmith@health.nsw.gov.au

EVALUATION AND RESEARCH WEBINAR SERIES

HETI's Evaluation and Research Webcast Series held its 3rd webinar of 2022 on the 22 June.

Professor Trevor Gibbs, currently the President of the Association for Medical Education in Europe (AMEE), led the discussion on how to 'create purposeful collaboration in health professions education'. Professor Gibbs uses a modern definition of collaboration developed through his experience from many years of faculty development, which contrasts with the frequently applied 'one-way process' of one institution instructing another on how activities should be enacted.

A recording of this webinar will be available in mid-July on the **HETI website**, along with all the other webinars in the series.

→ **Contact:** Luciano.Santosdemelo@health.nsw.gov.au



2022 NSW RURAL ALLIED HEALTH CLINICAL PLACEMENT GRANTS

NSW Rural Allied Health Clinical Placement Grants provide financial assistance to both rural and urban allied health students with the travel and accommodation costs of rural clinical placements.

Placement grants of up to \$750 (or \$1,000 for placements at Broken Hill) are offered each semester.

NSW Rural Allied Health Clinical Placement Grants | HETI

→ **Contact: Donna.Fong@health.nsw.gov.au**

NURSING AND MIDWIFERY UNDERGRADUATE CLINICAL PLACEMENT GRANTS

Grants up to \$1,000 for clinical placements in a NSW public health facility are available to NSW students undertaking a Bachelor of Nursing or Bachelor of Midwifery degree. Grants to assist with accommodation and travel associated with your clinical placement will be awarded based on the distance between the GPO of your 'home' university campus and the GPO of the clinical placement.

Nursing & Midwifery Undergraduate Clinical Placement Grants | HETI

→ **Contact: Donna.Fong@health.nsw.gov.au**

NSW REGIONAL HEALTH PLAN CONSULTATION SUPPORT

NSW Health's newly created Regional Health Division is currently rolling out intensive consultation sessions to gather information for a 10 year Regional Health Plan. The Health Education Training Institute (HETI) is partnering with the Division to provide facilitation for 15 stakeholder consultation sessions until mid-July, as part of a total group of 45 sessions across the State.

External stakeholder sessions will include a broad range of participants, including professional organisations, research and training entities, non-governmental organisations, aged care, Aboriginal health providers and Primary Health Networks. Internal stakeholder consultations will include nine regional local health districts, specialty health networks, pillar organisations, shared services and Ministry branches.

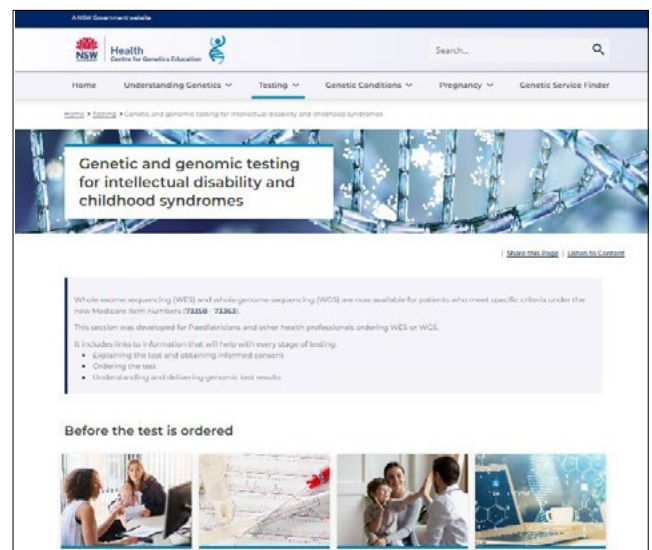
HETI.NSW.GOV.AU

The consultation will explore the direction and needs of Regional Health, in a similar way to the consultations previously held for the recently published NSW Health Future Health Strategy.

HETI continues to support a Facilitator Community of Practice which has a membership of over 300 NSW Health staff, all of whom have undertaken the Facilitator Development Program. Facilitators external to HETI have been accessed from this pool for the balance of the 45 sessions noted above.

→ **Contact: Gene.Johnson@health.nsw.gov.au**

INTELLECTUAL DISABILITY INFORMATION ON THE CENTRE FOR GENETICS EDUCATION WEBSITE



The **Centre for Genetics Education (CGE) website** has a new section on **intellectual disability and childhood syndromes** which provides information for paediatricians ordering genomic tests for these conditions.

The information on genomic testing for intellectual disability and childhood syndromes includes:

- considerations before ordering the test
- a guide on ordering the test
- types of test results which may return from the laboratory.

There are also educational videos to guide paediatricians about ordering paediatric genomic testing under Medicare found under both headings "Before the test is ordered" and "Online learning for Health Professionals" on the webpage.

→ **Contact: Marie.Cusack@health.nsw.gov.au**

HETI PSYCHIATRY AND MENTAL HEALTH AWARDS



The HETI Psychiatry and Mental Health Awards open for applications on 18 July this year and will accept applications until 15 August 2022. These annual awards are open to psychiatry registrars who wish to undertake clinical skills training in specialised areas, and the research awards are open to all mental health practitioners, to give them the opportunity to develop research skills and dedicated time to undertake a research project.

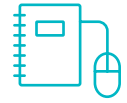
Details on the HETI Psychiatry and Mental Health Awards are found at <https://www.heti.nsw.gov.au/Placements-Scholarships-Grants/mental-health-awards> which includes details and information on eligibility, conditions for application and scope of the Awards. A list of the 2022-23 HETI Awards recipients is also found on that page. Two recent HETI Awards recipients share their stories on the HETI website on what they've achieved and the impact on their careers as successful practitioners for good mental health through this funding.

These HETI Awards could influence the future opportunities for your mental health staff and improve service outcomes.

→ **Contact:** Neridah.Callaghan@health.nsw.gov.au

MY HEALTH LEARNING

NEW AND REVISED RESOURCES:



TITLE	COURSE CODE
Pain Management: Peripheral regional infusions	425285164
SIMCHAT - Debriefing in simulation for clinical educators (refresh)	427723589
Learning Pod: Mental Health Update for Clinicians (refresh)	416405100
Comprehensive Care	423813264
Health Equity and the social determinants (refresh)	242567952
JH&FMHN Code of Conduct (refresh)	173995333
Occupational Assessment, Screening and Vaccination (refresh)	271245500
Perinatal Mental Health Toolkit	425040688
Allied Health Professional Educators (AHPEN) Forum - Making Sense of Evaluation	421400177

→ Contact: Chitti.Taluri@health.nsw.gov.au

myhealthlearning.health.nsw.gov.au

TO BE THE FIRST-CHOICE PARTNER
FOR EDUCATION AND TRAINING IN
NSW HEALTH