

HETI SENIOR EXECUTIVE FORUM REPORT

JUNE 2022



In partnership with Hunter New England Local Health District, the Sister Alison Bush AO Mobile Simulation Centre is back on the road with a busy start to the year.

THE SISTER ALISON BUSH AO MOBILE SIMULATION CENTRE IS BACK ON THE ROAD!

After two years of limited activity during the COVID-19 pandemic the Sister Alison Bush AO Mobile Simulation Centre is back on the road with a busy start to the year. In partnership with Hunter New England Local Health District, a Rural Perioperative one-day program was delivered in Moree and Inverell, with 22 nurses from the district attending full day education tailored to support rural nurses in their transition to perioperative practice. The continued rollout of the program is planned for 2022/23.

Glen Innes District Hospital hosted the delivery of the rural Emergency Masterclass in May with 13 nurses, doctors and paramedics from the region participating in the 2-day simulation-based education program. The Emergency Masterclass focuses on the care of critically ill and injured patients presenting

to rural NSW Health facilities, with an emphasis on fostering interprofessional teamwork.

Working in partnership with the Justice Health and Forensic Mental Health Network, the virtual Simulation FUN-da-mentals program was held in March to support clinical educators to develop their ability to utilise simulation as an educational methodology. A one-day face-to-face session will be held this month to consolidate and practice these skills.

A simulation round robin was held in Bathurst this month in partnership with the Royal Australian College of General Practitioners. 38 GP's from across NSW participated in a one-day workshop with 7 simultaneous simulation activities repeated 7 times! HETI expresses its gratitude to all the Western NSW Local Health District and NSW Ambulance staff who contributed their skills and knowledge to help create a powerful interprofessional learning experience for NSW GP's.

→ **Contact:** Kat.Blake@health.nsw.gov.au

HETI RECOGNISES RECONCILIATION WEEK 26 – 31 MAY 2022

HETI staff participated in a range of special events to mark Reconciliation Week, including launching the new HETI Aboriginal Social and Emotional Wellbeing Module developed for all NSW Health Aboriginal staff.

A message for HETI staff delivered at the launch from Brenda Holt, Aboriginal Health Educator:

Thank you all for joining in on this special event. On reflection of this special event held today is just a small reminder why we give special importance towards 27 May to 3 June National Reconciliation Week 2022.

It's a week that begins with the anniversary of the 1967 referendum (27 May) and ends with the anniversary of the historic Mabo native title decision (3 June). The aim of this week is to celebrate and reflect on the relationships between Australia's Aboriginal and Torres Strait Islander Peoples and the broader Australian community we all live in.

Also is a time for all Australians to learn about our shared histories, cultures, and achievements, and to explore how each of us can contribute to achieving reconciliation in Australia.

This year we are asking everyone to make change! Beginning with brave actions in your daily lives – where you live, work, play and socialise.

I believe and reflect on that reconciliation is about the journey rather than the destination, and that this journey takes time. There is so much of Australia's real history that needs to be told.

Therefore I encouraged all of us to reflect on the past and strengthen our resolve for shaping a better Australia in the years to come.

Thankyou HETI staff for making this commitment to change and give understanding when working together.

→ **Contact:** Brenda.Holt@health.nsw.gov.au

CLINICAL CASE PRESENTATION SERIES

The Physician Training Council (PTC), supported by HETI, has developed a program for Basic Physician Trainees (BPTs) sitting their clinical exams in 2022 to provide exposure to areas they would not ordinarily be exposed to in their respective networks.

What has historically been provided as the BPT Masterclass in a face-to-face format, has this year been adapted to form the Clinical Case presentation series delivered in an online format to mitigate risks of COVID.

The first of the Clinical Case presentation series was delivered online on Sunday 22nd May to over 120 participants. The second and final presentation of the series was delivered on Sunday 5th June, with close to 200 participants registered to attend.

The event incurs no cost to participants and presentations are recorded to enable on demand access to recordings for trainees unable to attend the live events.

→ **Contact:** Carla.Brogden@health.nsw.gov.au

INTERNATIONAL COLLABORATION: MOVING AWAY FROM COLONIALISM

The upcoming webinar in the Evaluation and Research Webcast Series (held on Wednesday 22 June 2022, 6:00pm – 7:00pm AEST) will feature guest speaker Professor Trevor Gibbs who will explore how to create purposeful collaboration in health professions education.

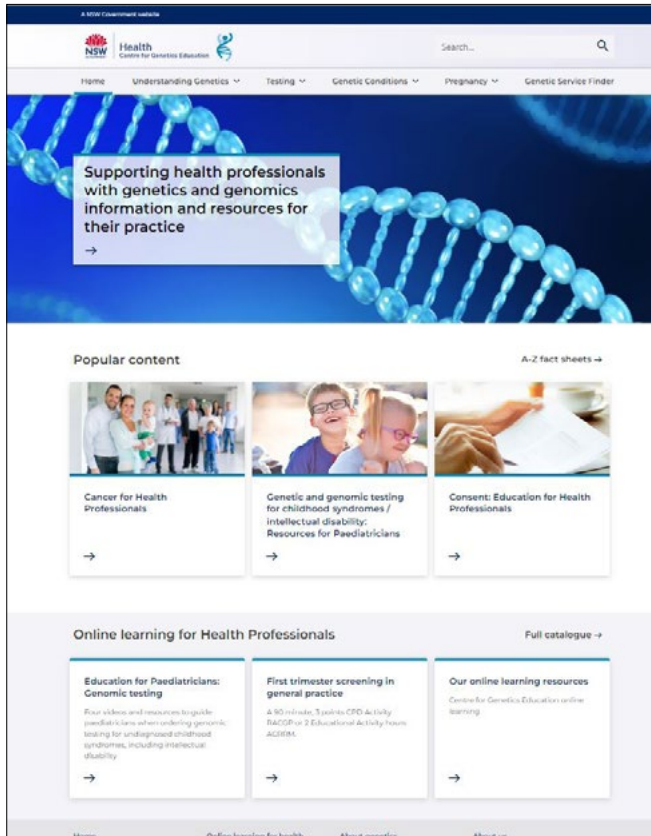
Professor Gibbs will share a wider definition of collaboration and discuss what can be achieved in interprofessional approaches to collaboration.

Read more about this webinar.

→ **Contact:** Luciano.Santosdemelo@health.nsw.gov.au



THE CENTRE FOR GENETICS EDUCATION'S NEW WEBSITE IS HERE!



The Centre for Genetics Education (CGE) website has been updated and refreshed.

The new website features:

- Simpler, more intuitive navigation
- An interactive map-based Genetic Service finder that searches for services by suburb
- Enhanced search capability
- Improved accessibility, including text to speech functionality
- Optimisation for use on mobile devices.

The new site can still be found at <https://www.genetics.edu.au>.

→ **Contact:** contact@genetics.edu.au

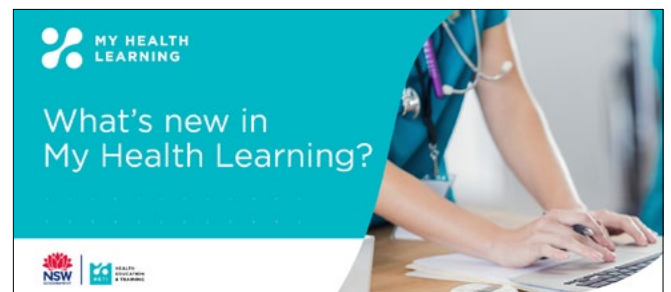
SMOKING AND VAPING CESSATION FOR PREGNANCY AND BEYOND

The second webinar of the Jumbunna Sessions for 2022 (held on Wednesday 15 June 2022, 1:00pm – 2:30pm AEST) focused on a family partnership approach to healthcare. It demonstrated a strength-based yarning method to smoking and vaping cessation that can lead to engaging and motivating conversations to support parents and families having a healthy start to life.

The webinar provided an update on the effects, impacts and challenges smoking and vaping have on Aboriginal families and communities in NSW. This innovative, engaging and timely webinar was led by the Centre for Population Health team at the Ministry of Health and supported by the Aboriginal Maternal Infant Health Service (AMIHS).

→ **Contact:** Ebony.Eulo1@health.nsw.gov.au

KEEP UP WITH THE LATEST IN MY HEALTH LEARNING



We have launched the first edition of What's New in My Health Learning – an email update of all new and rebuilt e-learning modules published on My Health Learning in April and May 2022. This email campaign will be sent monthly, featuring modules published in the previous month.

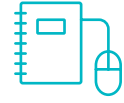
This campaign aims to raise awareness of the latest resources on My Health Learning and to encourage enrolment to courses for professional development and upskilling.

The latest My Health Learning resources can also be found on the new **My Health Learning webpage** on the HETI website.

→ **Contact:** HETI-District@health.nsw.gov.au

MY HEALTH LEARNING

NEW AND REVISED RESOURCES:



| TITLE | COURSE CODE |
|--|-------------|
| Aboriginal Social and Emotional Wellbeing | 420049395 |
| Employment: People with Disability (Refresh) | 214564254 |
| Recruitment: Module 2 Selection (Refresh) | 206764765 |
| Recruitment: Module 3 Post-Selection (Refresh) | 206767071 |
| Recruitment: Module 1 Pre-Selection (Refresh) | 206764095 |
| Care Coordination (Refresh) | 46356692 |
| Younger Onset Dementia | 415490634 |
| AFM Online Raising a Request (Rebuild) | 251692010 |
| Learning Pod: Mental Health Update for Clinicians | 416405100 |
| Module 4 - Lesser-known rhythms and ECG interpretation | 420313828 |
| Module E: Documenting and reporting the OCS results | 396711653 |
| Module D: Scoring and Interpretation | 396711333 |
| Module C: Administration | 396710795 |
| Module B: Introduction to the Oxford Cognitive Screen (OCS) | 396710141 |
| Module A: Introduction to cognition and cognitive screening after stroke | 396705139 |
| Impact of Trauma on Patient Engagement | 419147097 |
| Trauma management: Head injuries | 419688485 |
| Trauma management: Physiological and clinical alterations | 419718350 |
| Aged Care Quality Standards | 419100776 |
| Clinical Documentation (Refresh) | 39831941 |
| Emergency Department Provision of HIV Post-Exposure Prophylaxis (PEP) | 420971178 |

→ **Contact:** Chitti.Taluri@health.nsw.gov.au

myhealthlearning.health.nsw.gov.au

TO BE THE FIRST-CHOICE PARTNER
FOR EDUCATION AND TRAINING IN
NSW HEALTH