

SENIOR EXECUTIVE FORUM REPORT



50 graduates from Applied Mental Health Studies Graduate Certificates, Diplomas and Masters and Psychiatric Medicine Graduate Certificates and Diplomas.

HETI HIGHER EDUCATION GRADUATION

On Friday 7 May HETI was pleased to celebrate 50 of its students graduating from their courses. The graduates were from Applied Mental Health Studies Graduate Certificates, Diplomas and Masters and Psychiatric Medicine Graduate Certificates and Diplomas. The event was held online with addresses from the Secretary, Ms Elizabeth Koff, Professor Lynne Madden, Chair of the HETI Academic Board, and HETI Chief Executive Adjunct Professor Annette Solman. The great achievements of the students in completing studies during 2020 were noted by all, especially given the demands so many of the students had managed in their Health work roles during the pandemic. There were encouraging messages exchanged between students about how important it has been to them to build their capabilities in mental health and how supported they had felt during their studies. It is clear the class members of 2020 will continue to make a big difference in mental health.

HETI Higher Education also took the opportunity to make a Recognition of Service Award to Dr Nick O'Connor, who left the role as inaugural Chair of the HETI Higher Education Governing Council in December 2020 but had been involved for over 20 years in governance committees with the former

organisation, the NSW Institute of Psychiatry and HETI for almost 20 years. The contributions made by Dr O'Connor are many and his passion for quality education and good governance processes have been a great asset to HETI as it continues to develop its higher education capability. HETI is pleased to announce that Professor Kay Wilhelm has recently commenced as Governing Council Chair and has continued the strong traditions for this role.

→ **Contact:** Rhonda.Loftus@health.nsw.gov.au

SCHOLARSHIP OPPORTUNITIES FOR HETI HIGHER EDUCATION

As well as seeing some students off with their awards, HETI has launched the scholarships for Semester 2 2021 for Child and Youth Services and for Older Persons. These are great opportunities for learners to apply for a scholarship that will cover up to 75% of the costs of their study. Applications are open now and will close in late June. There are also scholarships for General Practitioners open, with more information for all available at <https://heli.edu.au/student-information/key-information/scholarships>

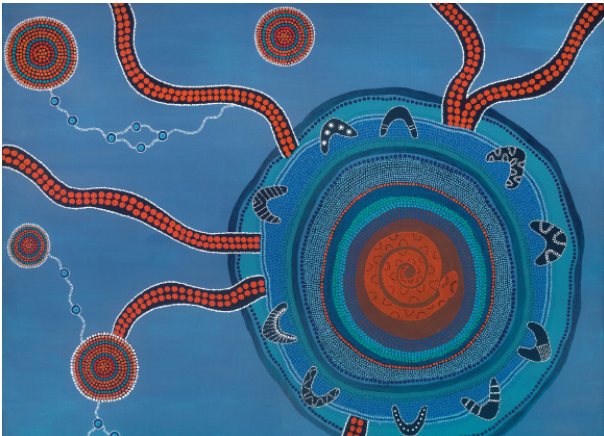
→ **Contact:** Rhonda.Loftus@health.nsw.gov.au

HETI'S OFFER OF A FULL-TIME AWARD

2020 was the first time HETI offered its Full-time Graduate Certificate Applied Mental Health Studies. HETI was pleased to be selected by the Commonwealth to be a part of its short course program again in 2021 so that students can undertake an award within a six-month period at a heavily subsidised price. We know from our student demographics that many learners who have already completed the course did so to assist them to move into mental health. For others who were new to the field, it gave them opportunities to develop capabilities. Learners can choose from all life stage specialisations. More details at <https://heti.edu.au/news/news/new-full-time-applied-mental-health-studies-course-for-2021>

→ Contact: Rhonda.Loftus@health.nsw.gov.au

BRINGING TOGETHER NSW ABORIGINAL TRAINEE DOCTORS



The Aboriginal Trainee Doctors' Forum (the Forum) is a state-wide meeting of self-identified Aboriginal trainee doctors and final year medical students. The Forum is usually held biannually and was first established in 2015 to provide face-to-face support to all NSW Aboriginal medical trainees to ensure every opportunity for success. The Forum is a collaboration between HETI, the Ministry of Health's Aboriginal Workforce team, and the Australian Indigenous Doctors' Association (AIDA).

The Forum was held at 1 Reserve Road, with ten attendees from across the state attending in

person, while five attended via Zoom. The majority of attendees were final year medical students or first year medical trainees.

The attendees were treated to presentations on the JMO journey and work preparedness from Dr Kelvin Kong, Paediatric & Adult Otolaryngology and Head & Neck Surgeon, and Aunty Kerrie Doyle, Associate Dean, Indigenous Health, School of Medicine, University of Western Sydney. Discussions were held with Dr Linda MacPherson, Ministry of Health Workforce Branch regarding work around increasing the number of Aboriginal medical specialists and some of the barriers to entering speciality training. Dr Mirna Hunter, JMO, also presented on the Ngangkari Traditional Healers. The Forum also enabled attendees to network and have a yarn.



The next Forum will be held on Friday, 15 October 2021.

→ Contact: HETI-ATDF@health.nsw.gov.au

PEOPLE MANAGEMENT SKILLS PROGRAM (REVISED 2021)

Compassionate managers who access and hone their leadership skills are foundational to a sustainable workforce and talent management. 2020 saw the postponement of the major HETI program – People Management Skills Program (PMSP) due to COVID-19 impacts on delivery. The program has been re-designed for the virtual medium with a contemporary and evidenced-based approach to effective people management. The content is highly engaging, visually stimulating and participants are supported with an interactive resource toolkit. The program takes a deep dive into management processes including critical analysis, strategic thinking, communication skills, understanding engagement and wellbeing. The redesign, underpinned by the NSW Health Leadership and Management Framework, is informed by stakeholder feedback and links to Statewide initiatives including Elevating the Human Experience.



The program has six modules, available as six separate half day modules, or in whole day intensives (two modules per day). The sessions are open to all NSW Health organisations, supporting a growing network and community of practice between managers.

“I never thought it would be so lively, interactive, engaging and thought provoking. Loved it and now looking forward to attend second part!” – PMSP Module 1 participant, May 2021

Enrolments for the Autumn roll out are closed. The next cohort will run in Spring 2021. Managers/acting managers/emerging managers can email heti-management@health.nsw.gov.au to register interest. Details of the next enrolment period will be circulated to Health organisations and published on the HETI website.

→ **Contact:** heti-management@health.nsw.gov.au

CONNECTIONS WORKSHOP: SUPPORTING ABORIGINAL MATERNAL, CHILD AND FAMILY HEALTH

The Connections Workshop for AMIHS and BSF is a continuing workshop for Aboriginal Maternal Infant Health Service (AMIHS) and Building Strong Foundations Services (BSF) staff to come together to yarn, network and connect virtually in a workshop to learn, share stories and support one another.

The upcoming Connections Workshop will be delivered in June 2021 by Aunty Rosemary Wanganeen, a proud South Australian Aboriginal woman with ancestral links to Kurna of the Adelaide Plains and Wirringu from the West Coast. Aunty Rosemary is a Griefologist and founder of the Australian Institute for Loss and Grief. Aunty

Rosemary will introduce her self-designed model, the Seven Phases to Integrating Loss and Grief. The model demonstrates how culturally appropriate and holistic approaches can transform Aboriginal disadvantage into Aboriginal prosperity.

AMIHS and BSF staff will have an opportunity to come together to have a yarn in a culturally safe learning environment to understand how intergenerational suppressed, unresolved grief occurs and how it compounds and complicates our contemporary young people, their families and our communities today. AMIHS and BSF staff will walk away with an understanding of loss and grief and how best to support an individual, family or community coming from a strength-based approach.

→ **Contact:** Ebony.Eulo1@health.nsw.gov.au

STRENGTHENING FOUNDATIONS VIRTUAL WORKSHOP

The Strengthening Foundations Orientation Workshop was held virtually on 28 April 2021. The workshop is part of a Program to support staff employed in the Aboriginal Maternal Infant Health Services (AMIHS) and the Building Strong Foundations (BSF) Service. AMIHS delivers Aboriginal maternity care based on a continuity-of-care model where midwives and Aboriginal health workers collaborate to provide high-quality culturally safe, woman-centred care, that is based on primary healthcare principles and provided in partnership with Aboriginal families and communities. The newborn and family then transition to the BSF service where child and family health care is continued with the family and community until the child is of school age.

The HETI Training and Support Unit (TSU) provides high quality education and training to the staff employed in these services. The TSU ensures staff have the knowledge, and are skilled to provide sustainable, culturally appropriate maternity and child health care for Aboriginal families and communities across NSW.

The participants at the workshop included two Aboriginal health practitioner trainees, an Aboriginal health worker, two midwives, a midwife / child family health nurse, two social

workers, a social work student, an out of home care / paediatric coordinator, a service manager and a child and family health nurse / clinic nurse consultant from Far West, Western NSW, Hunter New England, Central Coast and Illawarra Shoalhaven, Southern, Murrumbidgee and Nepean Blue Mountains Local Health Districts. The participants attending the workshop provide care to Aboriginal families in the communities of Broken Hill, Menindee, Condobolin, Wagga Wagga, Kurri Kurri, Moruya, Springwood, Muswellbrook, Newcastle, Port Stephens, Lake Macquarie, Quirindi, Cranebrook, Nowra and Narrabri.

Feedback from the participants when asked, 'As a result of participating in this workshop I will ...'

- promote the concept of Clinical Yarning
- have greater cultural understanding
- understand client inclusive practice in a more diverse role
- endeavour to continually provide cultural respect when supporting Aboriginal families

→ **Contact:** Sharon.Taylor3@health.nsw.gov.au

ADVANCED SKILLS TRAINING INFORMATION SESSIONS

Advanced Skills Training Information Sessions for 2021 Foundation Year cohort of the NSW Rural Generalist Training Program

A series of evening Zoom sessions were conducted for the Current Foundation Year trainees to provide valuable information on the potential Advanced Skills Training opportunities available to them for 2022 and beyond. These sessions were well attended by trainees and conducted with the support of the Rural Directors of Training and a variety of LHD Heads of Departments and / or Supervisors of Training from each of the specialties. Emergency Medicine, Palliative Care, Anaesthetics and Obstetrics proved particularly popular with Mental Health and Paediatrics gaining increased attention. The feedback on content and delivery were particularly favourable.

→ **Contact:** Karen.Beattie1@health.nsw.gov.au

NATIONAL RURAL GENERALIST PATHWAY MODULES

HETI has partnered with the Commonwealth Department of Health to develop four (4) modules for the National Rural Generalist Pathway. The modules are one part of a project HETI is commissioned to undertake to support the development of a National pathway.

The pathway recognises the extra requirements and skills of rural generalists and supports them to meet the diverse health needs of regional, rural and remote Australians. HETI's work on this project will support trainee rural generalists nationally as well as within NSW.

The modules developed by HETI target rural generalist trainees who are entering their Advanced Skills Training (AST) year. They provide informative content on the experience of the AST year to prepare and support trainees to get the most out of their AST training. The modules include supportive tips and guidance from interviews of a range of AST trainees and supervisors in real-life rural vignettes.

Available now, the four modules are housed under an umbrella HTML resource and can be accessed through My Health Learning course code **359069669**

HETI is the coordination unit for the National Rural Generalist Pathway in NSW. Visit the website to learn more about the NSW program <https://www.heti.nsw.gov.au/education-and-training/courses-and-programs/nsw-rural-generalist-medical-training-program>

→ **Contact:** Louise.Baker3@health.nsw.gov.au



MY HEALTH LEARNING

New and revised resources:



Title	Course code
Module 2 Basic understanding of the electrocardiogram (ECG) and rhythm interpretation	359181145
Preparing for your AST year	359069669
NSW Perinatal Post-mortem Service	359235761
Maternal Emergency Presentations in Non-birthing Facilities - Facilitator Guide	359033590
Getting started with SAPHaRI	358245944
Advocacy	326585912
Introduction to Pathway 1 - Professional and Ethical Practice	326032155
Mental Health Pathways in Practice - Pathway 1: Facilitator Resources	333407615
My Ethical Practice	326032422
My Legal Responsibilities	327360888
My Professional Values	326032281
Partnership and Collaboration	326585383
Privacy and Dignity	326585499
Professional Development - Your Role and Your Vision	326585728
Promoting Recovery and Hope	327334484
Self-management	327333967
Key Principles of Smooth Patient Flow (Refresh)	40382709
Waste Management (Refresh)	39966595
Healthy Weight Gain in Pregnancy (Refresh)	91866447
Advanced Life Support Theory - Module C Quiz (Refresh)	197482978
Documentation and Activity Based Funding for Clinicians (Refresh)	39988532
Physiotherapy Management of Plagiocephaly (Refresh)	85704450
Caring for Young People with Mental Health Issues in Paediatric Inpatient Settings (Refresh)	151931482
Pressure Injury Point Prevalence Survey (Conducting) (Refresh)	40063970
HEEADSSS: VIDEO 1 - Working with young people - the role of conversations (Refresh)	159949091
HEEADSSS: VIDEO 2 - What a young person may bring to the conversation (Refresh)	160031090
HEEADSSS: VIDEO 3 - Useful tips for conversations (Refresh)	160031203

🔗 HEEADSSS: VIDEO 4 - Developing a responsive management plan (Refresh)	160031204
🔗 Supporting the Learner (Refresh)	39966188
🔗 Safe use of benzodiazepines in the older person (Refresh)	167643179
🔗 Complaints Management at Point of Service (Refresh)	53526030

→ Contact: Chitti.Taluri@health.nsw.gov.au

myhealthlearning.health.nsw.gov.au

TO BE THE FIRST-CHOICE PARTNER FOR
EDUCATION AND TRAINING IN NSW HEALTH