

Contacts

JMO Manager

Sophie Watt

Email: MLHD-WWBHJMOManager@health.nsw.gov.au

Phone: 02 5943 3402

Director of Prevocational Training

Dr Christopher Mumme – christopher.mumme@health.nsw.gov.au

JMOs

Dr Alyce Finch – Alyce.Finch@health.nsw.gov.au

Dr Sebastian Trevaskis – Sebastian.Trevaskis@health.nsw.gov.au

More Information

Murrumbidgee Local Health Network

<http://www.mlhd.health.nsw.gov.au>

Visit Wagga

<http://www.waggawaggaaustralia.com.au>

Wagga City Council

<http://www.wagga.nsw.gov.au>

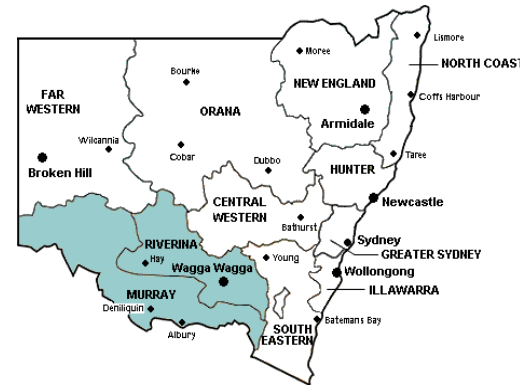
Wagga Wagga Base Hospital
HETI Rural Preferential Recruitment (RPR)

WAGGA WAGGA BASE HOSPITAL

History of Wagga Wagga



THE PLACE OF MANY CROWS



The original inhabitants of the Wagga Wagga region were the Wiradjuri people and the term Wagga Wagga translates to the 'the place of many crows'. The Murrumbidgee River which runs through the City also derived its name from the aboriginal language and means "plenty water" or "big water". European exploration of the future site of Wagga Wagga began in 1829 with the arrival of Captain Charles Sturt. Wagga grew quickly, reaching a population of 627 in 1861 and during that decade a number of hotels and stores opened, as well as professional services in the form of banks, solicitors, doctors and dentists.

The outbreak of World War II saw Royal Australian Air Force bases established at Forest Hill in 1940 and Uranquinty in 1941. A major Australian Army camp was constructed at Kapooka in 1942. After the war, Wagga Wagga grew steadily and was proclaimed a city on 17 April 1946. In 1971, following pressure from the Wagga Wagga community for a university, the teachers' college established in 1947 became the Riverina College of Advanced Education. In 1989, the College amalgamated with the College of Advanced Education at Bathurst to become Charles Sturt University.

GEOGRAPHY & DEMOGRAPHICS

- WAGGA WAGGA IS ALMOST EXACTLY HALFWAY BETWEEN MELBOURNE AND SYDNEY.
- IT IS 180M ABOVE SEA LEVEL AT THE COUNCIL CHAMBERS.
- WAGGA WAGGA IS LOCATED ON THE STURT HIGHWAY, WHICH JOINS THE HUME HIGHWAY 48KM TO THE EAST.
- IN 2019 THE TOTAL POPULATION OF WAGGA WAGGA WAS 64,000
- INDIGENOUS POPULATION OF 3,500



THE PLACE OF ...MANY CROWS

TRANSPORT

FLIGHTS

- Departing Sydney: Qantas and Rex have regular direct flights from Sydney to Wagga Wagga (1hr 10min)
- Departing Melbourne: Qantas and Rex have regular direct flights from Melbourne to Wagga Wagga (1hr 10min)
- Departing Brisbane: Daily flights from Brisbane to Wagga Wagga via Sydney (approx. 4.5 – 5hr round trip)

TRAIN

There are twice daily trains to both Sydney and Melbourne.

CAR

It is 457km drive to Sydney and 451km drive to Melbourne, both taking approximately 4hrs 30mins.

SCHOOLS

There are over 20 primary schools, eight secondary schools and a wide choice of preschools and child care centres. To find out more, check out the full details at

<http://www.waggawaggaaustralia.com.au/schools-and-education>

INTERESTING FACTS

It may seem like a big country town, but its rich culture, history and heritage combined with its modern facilities and infrastructure make it a fast growing destination.

Wagga Wagga is a local mecca for culture and heritage with its stunning galleries, museums and city library. The city's galleries and museums showcase some of the finest artworks by international and Australian artists. Meanwhile, the city library has earned several awards for its innovative service and community interaction.

SPORTS

CITY OF GOOD SPORTS

There are a Huge variety of sports available to play in Wagga including:

- AFL
- Rugby League
- Rugby Union
- Netball
- Tennis
- Soccer
- Hockey
- Golf
- Horse Riding
- Touch Football
- Athletics



Terms Available at Wagga Wagga Base Hospital...

WWBH has 325 beds and services a population of over 250,000 people. There is an Intensive Care Unit, 8 Operating Theatres, a Rehabilitation Unit, Mental Health Facility, 24-hour interventional Radiology and Cardiac Catheter Suite and a regional Cancer Care Centre offering both medical and radiation oncology services.



THE FOLLOWING MEDICAL SPECIALTIES DISCIPLINES ARE AVAILABLE:

- Cardiology
- Respiratory medicine
- Renal Medicine
- Gastroenterology
- Neurology
- Oncology
- Radiation Oncology
- General Medicine
- Rehabilitation Medicine
- Geriatrics
- Psychiatry
- Paediatrics
- General Practice
- Obstetrics and Gynaecology
- General Surgery
- Vascular Surgery
- Urology
- ENT Surgery
- Orthopaedic Surgery
- Hand & Plastic Surgery
- Paediatric Surgery
- Ophthalmology
- Anaesthetics
- ICU
- Emergency Medicine
- Pathology
- Radiology

PGY 1

- General Medicine
- General Surgery
- General Practice
- Emergency Medicine
- Rehabilitation Medicine
- Geriatric Medicine
- Psychiatry



PGY 2

- General Medicine
- General Surgery
- General Practice
- Emergency Medicine
- Psychiatry/Psychogeriatrics
- ICU
- Anaesthetics
- O&G
- Radiology
- Pathology
- Paediatrics
- Rehabilitation Medicine
- Geriatric Medicine



UNSW Rural Clinical School



UNSW Rural Clinical School provides education and training for all 6 years of their undergraduate medical program. Their new clinical school is currently under construction on the hospital campus. Opportunities also exist for Conjoint Lecturer positions for JMOs wishing to formalise their teaching activities.

WAGGA WAGGA BASE HOSPITAL ...REDEVELOPMENT

Redevelopment was completed in 2021. This included replacement of all inpatient units including the emergency department, theatres, cardiac catheter suite and interventional radiology.

There is also a Staff Hub incorporating the latest presentation technology; a new lecture theatre and two nearby conference rooms, new clinical education and training spaces, including a simulation room and skills area and facilities for virtual training; a library, a dedicated Aboriginal meeting room and cultural courtyard; cafe; new multi-faith space; and facilities for corporate volunteers. There is also secure parking for fleet vehicles under the Health Services Hub.

Notre Dame Rural Clinical School

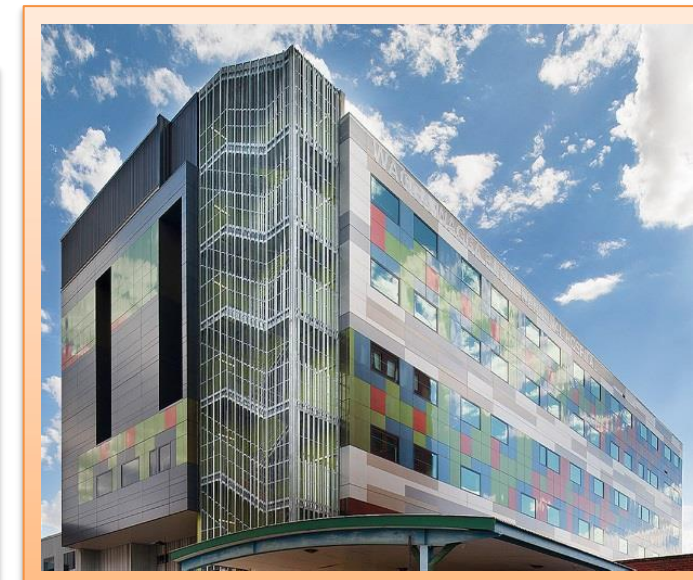
The Wagga Wagga Rural Clinical School opened in June 2011 in the grounds of Calvary Health Care Riverina. The standalone, purpose built clinical school building was opened in 2014. The new Clinical School building includes tutorial rooms, consulting suites, academic and staff offices, a lecture theatre, student common room and staff facilities. The clinical school provides teaching facilities for students in both the third and final years of the School's medical program.



Wagga Wagga RCS now hosts the Riverina Regional Training Hub (RRTH) an initiative of the Commonwealth government and a component the Integrated Rural Training Pipeline for Medicine (IRTP). The RRTH has a pivotal role in facilitating the advanced training of medical graduates by fostering opportunities for specialty training in the Riverina. The RRTH works with key stakeholders to support new doctors with a continuous and complete training pathway enabling them to live and work in the region over the long term.



Phase 1 – Mental Health Facility



Phase 2 and Phase 3

For More Information

<https://www.nsw.gov.au/departments-and-agencies/nsw-health/service-directory/wagga-wagga-health-service>

FAQS FOR JMOS CONSIDERING WWBH...

Is there an **RMO ASSOCIATION** at WWBH?

There is a very active RMO Association at the hospital. They are constantly advocating for Interns and Residents, to ensure that they get the most out of their time Wagga and have a good working life.

Am I likely to be paid **OVERTIME**?

If you follow the correct procedure, you will be paid for overtime. Don't worry you will be paid for all your hard work! Typically it is paid in the next pay cycle.

Do I have to work **NIGHTS**?

Interns are not required to work nights on the wards. Rostered weeknight evening shifts on the ward run from 8:00am til 10:00pm.

Can I do **RESEARCH** in Wagga?

There are many consultants undertaking research based at WWBH often on conjunction with UNSW. There are many opportunities for JMOs to be involved including the Rural Health Research Conference whereby all locally based researchers have the opportunity to formally present their research to their peers under professional conditions.

Do you provide free **ACCOMMODATION** for Interns?

The hospital does not provide free accommodation. However rental subsidies are offered to interns. As such you may choose to rent hospital accommodation, which is fully furnished and typically a shared unit or house in town, for a very reasonable \$100 per week. Or you have the option of receiving a subsidy of \$100 a week if you choose to rent your own place.

Are there regular **SOCIAL** events?

The RMO Association holds regular social events every term, from wine tastings to family fun days to the Annual RMOA Ball. There is also a usual following who play sport together weekly and attend pub trivia. Wagga Wagga hosts many social events which can be found on the below website.

<https://visitwagga.com/calendar>

How often am I required to work **WEEKEND SHIFTS**?

This will be dependent on which rotation you undertake. However the roster is fairly divided and workload is evenly spread. On average you will be required to work 1 in 4 weekends either on-call or on the wards.

I am really keen on undertaking a term at **ST VINCENT'S** in Sydney, is this likely to happen?

WWBH has an excellent relationship with our Network 10 Hospital St Vincent's. All JMO's are given the opportunity to undertake a rotation at St Vincent's during their time at WWBH. In addition, St Vincent's interns have the opportunity to undertake rotations in Wagga.

How will WWBH assist me in furthering my career **ASPIRATIONS**?

WWBH has a large number of specialities with consultants who are keen to teach and provide guidance on career aspirations and training pathways.