

## Contacts

### **JMO Manager**

Baha Mosa

Email: [baha.mosa@health.nsw.gov.au](mailto:baha.mosa@health.nsw.gov.au)

Phone: 02 5943 3404

### **Director of Prevocational Training**

Dr Christopher Mumme – [christopher.mumme@health.nsw.gov.au](mailto:christopher.mumme@health.nsw.gov.au)

### **JMOs**

Dr Katelyn Wilson - [wilska@outlook.com](mailto:wilska@outlook.com)

Dr Aziz Lawandos - [aziz.lawandos1@gmail.com](mailto:aziz.lawandos1@gmail.com)

## More Information

### **Murrumbidgee Local Health Network**

<http://www.mlhd.health.nsw.gov.au>

### **Visit Wagga**

<http://www.waggawaggaaustralia.com.au>

### **Wagga City Council**

<http://www.wagga.nsw.gov.au>

**Wagga Wagga Base Hospital**  
**HETI Rural Preferential Recruitment (RPR)**

# WAGGA WAGGA BASE HOSPITAL

## History of Wagga Wagga

### THE PLACE OF MANY CROWS



### GEOGRAPHY & DEMOGRAPHICS

- WAGGA WAGGA IS ALMOST EXACTLY HALFWAY BETWEEN MELBOURNE AND SYDNEY.
- IT IS 180M ABOVE SEA LEVEL AT THE COUNCIL CHAMBERS.
- WAGGA WAGGA IS LOCATED ON THE STURT HIGHWAY, WHICH JOINS THE HUME HIGHWAY 48KM TO THE EAST.
- IN 2019 THE TOTAL POPULATION OF WAGGA WAGGA WAS 64,000
- INDIGENOUS POPULATION OF 3,500



## THE PLACE OF ...MANY CROWS

### TRANSPORT

#### FLIGHTS

- Departing Sydney: Qantas and Rex have regular direct flights from Sydney to Wagga Wagga (1hr 10min)
- Departing Melbourne: Qantas and Rex have regular direct flights from Melbourne to Wagga Wagga (1hr 10min)
- Departing Brisbane: Daily flights from Brisbane to Wagga Wagga via Sydney (approx. 4.5 – 5hr round trip)

#### TRAIN

There are twice daily trains to both Sydney and Melbourne.

#### CAR

It is 457km drive to Sydney and 451km drive to Melbourne, both taking approximately 4hrs 30mins.



The outbreak of World War II saw Royal Australian Air Force bases established at Forest Hill in 1940 and Uranquinty in 1941. A major Australian Army camp was constructed at Kapooka in 1942. After the war, Wagga Wagga grew steadily and was proclaimed a city on 17 April 1946. In 1971, following pressure from the Wagga Wagga community for a university, the teachers' college established in 1947 became the Riverina College of Advanced Education. In 1989, the College amalgamated with the College of Advanced Education at Bathurst to become Charles Sturt University.

### SCHOOLS

There are over 20 primary schools, eight secondary schools and a wide choice of preschools and child care centres. To find out more, check out the full details at

<http://www.waggawaggaaustralia.com.au/schools-and-education>

### INTERESTING FACTS

It may seem like a big country town, but its rich culture, history and heritage combined with its modern facilities and infrastructure make it a fast growing destination.

Wagga Wagga is a local mecca for culture and heritage with its stunning galleries, museums and city library. The city's galleries and museums showcase some of the finest artworks by international and Australian artists. Meanwhile, the city library has earned several awards for its innovative service and community interaction.

### SPORTS

#### CITY OF GOOD SPORTS

There are a Huge variety of sports available to play in Wagga including:

- AFL
- Rugby League
- Rugby Union
- Netball
- Tennis
- Soccer
- Hockey
- Golf
- Horse Riding
- Touch Football
- Athletics



# Terms Available at Wagga Wagga Base Hospital...

WWBH has 265 beds and services a population of over 250,000 people. There is an Intensive Care Unit, 8 Operating Theatres, a Rehabilitation Unit, Mental Health Facility, 24-hour interventional Radiology and Cardiac Catheter Suite and a regional Cancer Care Centre offering both medical and radiation oncology services



## THE FOLLOWING MEDICAL SPECIALTIES DISCIPLINES ARE AVAILABLE:

- |  |  |
|--|--|
| <ul style="list-style-type: none"><li>• Cardiology</li><li>• Respiratory medicine</li><li>• Renal Medicine</li><li>• Gastroenterology</li><li>• Neurology</li><li>• Oncology</li><li>• Radiation Oncology</li><li>• General Medicine</li><li>• Rehabilitation Medicine</li><li>• Geriatrics</li><li>• Psychiatry</li><li>• Paediatrics</li><li>• General Practice</li><li>• Obstetrics and Gynaecology</li></ul> | <ul style="list-style-type: none"><li>• General Surgery</li><li>• Vascular Surgery</li><li>• Urology</li><li>• ENT Surgery</li><li>• Orthopaedic Surgery</li><li>• Hand &amp; Plastic Surgery</li><li>• Paediatric Surgery</li><li>• Ophthalmology</li><li>• Anaesthetics</li><li>• ICU</li><li>• Emergency Medicine</li><li>• Pathology</li><li>• Radiology</li></ul> |
|--|--|

## PGY 1

- General Medicine
- General Surgery
- General Practice
- Emergency Medicine
- Rehabilitation Medicine
- Geriatric Medicine
- Psychiatry



## PGY 2

- General Medicine
- General Surgery
- General Practice
- Emergency Medicine
- Psychiatry/Psychogeriatrics
- ICU
- Anaesthetics
- O&G
- Radiology
- Pathology
- Paediatrics
- Rehabilitation Medicine
- Geriatric Medicine



## UNSW Rural Clinical School



UNSW Rural Clinical School has full time 4<sup>th</sup>, 5<sup>th</sup> and 6<sup>th</sup> year students. The excellent lecture theatres, state of the art simulation laboratories and library are all available to JMOs and are used for weekly JMO teaching. Opportunities also exist for Conjoint Lecturer positions for JMOs wishing to formalise their teaching activities.

## WAGGA WAGGA BASE HOSPITAL ...REDEVELOPMENT

Almost \$300M has been allocated for the redevelopment of the WWBH facilities. The new facilities will be delivered on the current site and will be delivered in 3 phases:

### **Phase 1**

New acute and non-acute mental health facility (30 acute beds, 20 sub-acute beds). **Completed late 2013**

### **Phase 2**

New Emergency Department, Angiography Suites, Medical Imaging, Operating Theatres and Inpatient Wards. **Completed January 2016**

### **Phase 3**

**Completed 2021.**

## Notre Dame Rural Clinical School

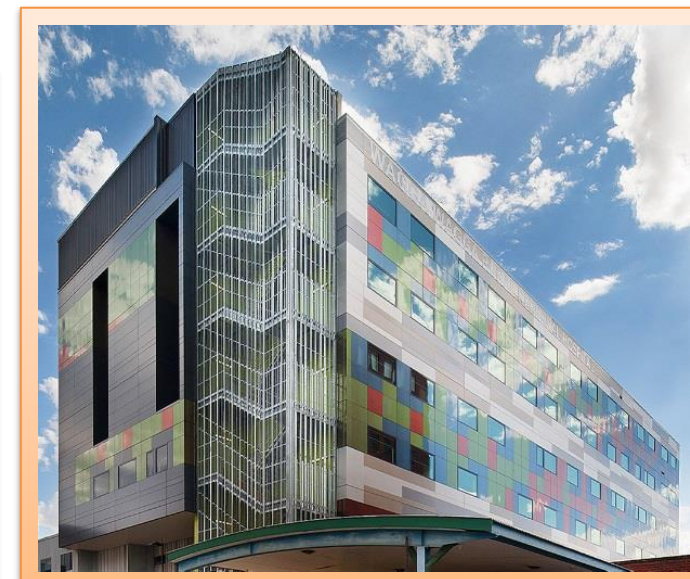
The Wagga Wagga Rural Clinical School opened in June 2011 in the grounds of Calvary Health Care Riverina. The standalone, purpose built clinical school building was opened in 2014. The new Clinical School building includes tutorial rooms, consulting suites, academic and staff offices, a lecture theatre, student common room and staff facilities. The clinical school provides teaching facilities for students in both the third and final years of the School's medical program.



Wagga Wagga RCS now hosts the Riverina Regional Training Hub (RRTH) an initiative of the Commonwealth government and a component the Integrated Rural Training Pipeline for Medicine (IRTP). The RRTH has a pivotal role in facilitating the advanced training of medical graduates by fostering opportunities for specialty training in the Riverina. The RRTH works with key stakeholders to support new doctors with a continuous and complete training pathway enabling them to live and work in the region over the long term.



**Phase 1 – Mental Health Facility**



**Phase 2 and Phase 3**

For More Information - <http://www.wwhsredev.health.nsw.gov.au/>

# FAQS FOR JMOS CONSIDERING WWBH...

## Is there an **RMO ASSOCIATION** at WWBH?

There is a very active RMO Association at the hospital. They are constantly advocating for Interns and Residents, to ensure that they get the most out of their time Wagga and have a good working life.

## Am I likely to be paid **OVERTIME**?

If you follow the correct procedure, you will be paid for overtime. Don't worry you will be paid for all your hard work! Typically it is paid in the next pay cycle.

## Do I have to work **NIGHTS**?

Interns are not required to work nights on the wards. Rostered weeknight evening shifts on the ward run from 4:30pm til 10:00pm.

## Can I do **RESEARCH** in Wagga?

There are many consultants undertaking research based at WWBH often on conjunction with UNSW. There are many opportunities for JMOs to be involved including the Rural Health Research Conference whereby all locally based researchers have the opportunity to formally present their research to their peers under professional conditions.

## Do you provide free **ACCOMMODATION** for Interns?

The hospital does not provide free accommodation. However rental subsidies are offered to interns. As such you may choose to rent hospital accommodation, which is fully furnished and typically a shared unit or house in town, for a very reasonable \$90 per week + utilities. Or you have the option of receiving a subsidy of \$90 a week if you choose to rent your own place.

## Are there regular **SOCIAL** events?

The RMO Association holds regular social events every term, from wine tastings to family fun days to the Annual RMOA Ball. In addition, typically interns can be seen out at the local brewery, The Thirsty Crow, on Friday nights. There is also a usual following who play sport together weekly and attend pub trivia.

## How often am I required to work **WEEKEND SHIFTS**?

This will be dependent on which rotation you undertake. However the roster is fairly divided and workload is evenly spread. On average you will be required to work 1 in 4 weekends either on-call or on the wards.

## I am really keen on undertaking a term at **ST VINCENT'S** in Sydney, is this likely to happen?

WWBH has an excellent relationship with our Network 10 Hospital St Vincent's. All interns are given the opportunity to undertake a rotation at St Vincent's during their time at WWBH. In addition, St Vincent's interns have the opportunity to undertake rotations in Wagga.

## How will WWBH assist me in furthering my career **ASPIRATIONS**?

WWBH has a large number of specialities with consultants who are keen to teach and mentor interns. There is a mentoring program in place whereby each intern is assigned to a senior doctor, who supports his or her growth over the intern year from their wellbeing to career advice.