

Network Information

Psychiatry Trainee Recruitment for 2026



Sydney West and Greater Southern (SWaGS) Network

The Sydney West and Greater Southern NSW (SWaGS) Psychiatry Training Network is committed to providing a supportive climate for psychiatry training while boasting access to high quality supervision and protected time to attend academic programs.

Who we are:

Sydney West and Greater Southern NSW	
Network Director of Training	A/Prof Anoop Sankaranarayanan Anoop.sankaranarayanan@health.nsw.gov.au
Education Support Officer	Ms. Richa Gupta richa.gupta@health.nsw.gov.au
Site Coordinators of Training	Westmead: Dr Alexander Nash Cumberland: Dr Malvika Ravi Blacktown: Dr Jeffrey Chow Nepean Blue Mountains: Dr Khushboo Baheti Goulburn Base Hospital: Dr Clint Pistelli Wagga Wagga Base Hospital: Dr Sean Hogan. The Children's Hospital: Dr Veena Raghupathy.
RSU support	Ms. Nimisha Acharya nimisha.acharya@health.nsw.gov.au
Network Composition	
Our training network covers a large geographical area and trainees have the opportunity work or be seconded to:	
<ul style="list-style-type: none"> • 4 LHD Mental Health Service <ul style="list-style-type: none"> • Western Sydney LHD Mental Health Service • Nepean Blue Mountains Mental Health Service • Murrumbidgee LHD Mental Health Service • Southern NSW LHD Mental Health Service. • 3 NSW Health Entities <ul style="list-style-type: none"> • Justice Health and Forensic Mental Health Network. • The Children's Hospital at Westmead. • Westmead Drug Health Service. • 3 Private Hospitals <ul style="list-style-type: none"> • St John of God Hospital, North Richmond. • Ramsay Clinic, Wentworthville. • Kellyville Private Hospital. • 1 NGO <ul style="list-style-type: none"> • Uniting Care/ Headspace. 	

The focus of our program is to provide trainees with:

- Immense opportunities to gain expertise in all specialisms of psychiatry.
- A broad range of clinical and non-clinical experience relevant to achieving core competencies
- The facilitation of high-quality exam preparation activities.
- Weekly psychiatry training sessions open to trainees of all stages.
- General education program that is clinically relevant (this may include: case presentations and management, skills acquisition/assessment, scenario management, use of skill labs where available)
- Access to Specialist Mental Health Librarian services to support scholarly project, journal club, and other training related queries.
- Specific Psychiatry Mortality and Morbidity meetings facilitated by Professor Anthony Harris.
- Well-resourced inpatient units with excellent supervision for all trainees across all stages and in particular, stag 1 trainees.
- Allocation of rotations with priority based on trainees' requirements to facilitate rapid progression through training.
- Supportive environment, with supervision and training by RANZCP Accredited supervisors and examiners and a high success rate in RANZCP Examinations
- A wide range of specialty areas in which to select a scholarly project to complete RANZCP requirements
- Training in RANZCP Advanced Training Certificate programs (for Stage 3), that comprise:
 - Addiction psychiatry
 - Adult psychiatry
 - Child and adolescent psychiatry
 - Consultation–liaison psychiatry
 - Forensic psychiatry
 - Psychiatry of old age
 - Psychotherapy
 -

The SWAGS trainees have opportunities to train in the following specialties across sites:

Adult General Inpatient Psychiatry	Westmead, Cumberland, Blacktown, Nepean, Blue Mountain, Wagga Wagga, Goulburn.
Child and Adolescent Psychiatry	Westmead, Blacktown, Nepean, Wagga Wagga
Perinatal Psychiatry	Westmead
Consultation Liaison Psychiatry	Westmead, Blacktown, Nepean, Wagga Wagga.
Psychiatry of Old Age	Westmead, Blacktown, Nepean, Wagga Wagga.
Early Psychosis Intervention Program	Cumberland, Nepean
Addiction Psychiatry	Cumberland and Westmead Hospital
Community Psychiatry	Nepean, Wagga Wagga, Westmead,
Rehabilitation and Recovery	Cumberland, Blacktown Melaleuca Unit.

Psychiatry	
Rural Psychiatry	Wagga Wagga and Goulburn
Private Psychiatry	St John of God at Richmond, Kellyville Private, Ramsay Clinic Wentworthville.
Youth Mental Health	Headspace at Parramatta and Mt Druitt
Forensic Mental Health	Budyari Gumada Blacktown Mental Health and secondment opportunity to Justice Health.
Psychotherapy	Westmead Psychotherapy Program, Anxiety clinic at Westmead.

The Westmead Psychotherapy Program include four modalities within the Certificate of Advanced Training in the Psychotherapies.

Trainees/Fellows-in-training complete the formal teaching program and case requirements of **one of the following modalities only**:

- individual dynamic psychotherapies
- structured and brief psychotherapies
- group psychotherapies
- family and couples' therapy.

There is strong academic presence at Westmead Hospital and Nepean Hospital and trainees have access to quality supervision for scholarly projects.

Swags research areas include:

- psychotherapy and Westmead Psychotherapy Program
- Biological Psychiatry – ECT Mood Disorders
- Early Intervention
- Chronic Schizophrenia & ECT
- Recovery oriented Model of Care
- Emotional Health Clinic

All our rotations are accredited by the Royal Australian and New Zealand College of Psychiatrists and the following Terms are available for training:

Western Sydney LHD Mental Health Service

Cumberland Hospital:

The largest mental health facility in NSW and the oldest in Australia, Cumberland Hospital is a 261 bedded mental health facility that was opened 175 years ago on 29th December 1849. Cumberland Hospital has acute, subacute, and long-stay mental health inpatient units. These are:

<ul style="list-style-type: none"> • Paringa Unit • Hainsworth Unit • Yaralla Unit • Riverview Unit • Acacia Unit • Banksia Unit • Boronia Unit • Willow and Waratah Units 	
--	--

Westmead Mental Health Precinct



The existing mental health services currently located at the Cumberland Hospital West Campus will be relocated to the new complex at Westmead. This is scheduled to open in 2026 and will be the largest mental health facility in NSW and will be connected to Westmead Hospital, providing better integration with the district's mental health and other clinical services and facilities.

Clinical services in the new Integrated Mental Health Complex will include:

- Acute mental health beds including beds for youth, adolescents, adults, older persons and people living with eating disorders
- Mental health intensive care and high dependency units
- A mental health assessment area
- Sub and non-acute mental health beds
- Multidisciplinary ambulatory and outpatient services
- Education facilities.

Westmead Hospital



WSLHD Perinatal, Child and Youth Mental Health Services (PCYMHS) targets children and young people (0-24 years) with moderate to severe mental health difficulties living within Western Sydney Local Health District. It also provides a range of early intervention and specialist programs for vulnerable populations. The majority of services are delivered by community-based teams, providing treatment and care close to people's homes. We have an adolescent inpatient unit for young people aged 12-18 years who may need extra support during times of acute distress. We have links with adult mental health, primary care networks such as GPs, hospital departments, schools, and a range of non-government and human services agencies. PCYMH Services has two main sites: Redbank House (based at

Westmead Hospital Campus) and Rupertswood (based at Mt Druitt Hospital Campus). Services are also provided out of leet St and Jeffery House- Parramatta Community Health Centre in Parramatta and also at Auburn Community Health Centre.

PCYMHS services in WSLHD include:

Age and Target Group	Perinatal, Child & Youth Mental Health Services
Pregnancy and 0-2 years	Perinatal & Infant Mental Health Service (PIMHS)
Children aged 2-12 years	Therapy for Kids & Families.
Adolescent and Youth (aged 12-24 years)	Prevention Early Intervention Recovery Service (PEIRS) in Auburn/ Parramatta/ Holroyd Hills LGA
	Blacktown Early Access Team (BEAT)
ACUTE PCYMH SERVICES	
Presentations to Emergency Department	ED Navigator Project for young people aged 16-18 years presenting at Westmead Hospital and Young people aged 12-18 years presenting at Blacktown Hospital
Inpatient unit for adolescents aged 12-18 years	Adolescent Acute Unit (AAU)- 9- bed mental health inpatient unit, a Statewide service.
Post ED presentation and/ or discharge from an inpatient setting	Engaging Assertively and Building Links to Empower (ENABLE) provides assertive 2-12 week follow up team for young people aged 12-18 years.
SPECIALIST PCYMH SERVICES	
Children and young people aged 0-18 years in Out-of-Home-Care	Alternate Care Clinic (ACC)
Children with significant child protection issues due to parental drug and alcohol or mental health issues.	Whole Family Team (WFT)
Interventions and support for schools	Getting on Track in Time (Gottit!) Program
	School- Link Program
Family members of individuals with a mental illness	Children of Parents with a Mental Illness (COPMI)/ Family Focused Recovery (FFR)
e- Perinatal and Infant Mental Health Services (Statewide outreach)	e- Perinatal & Infant Mental Health Services (e- PIMH)

Blacktown Hospital



Mental Health Inpatient Services in Blacktown include:

- Blacktown Hospital Inpatient Unit- B22 is a 30-bedded acute inpatient mental health unit.
- Melaleuca Unit- a 20-bedded sub-acute mental health inpatient unit.
- Blacktown Mental Health Recovery Centre- is a new 44-bed medium and low forensic care facility at Blacktown.
- Community Mental Health Team

Mental Health Inpatient Services in Blacktown include:

- Blacktown Hospital Inpatient Unit- B22 is a 30-bedded acute inpatient mental health unit.
- Melaleuca Unit- a 20-bedded sub-acute mental health inpatient unit.
- Blacktown Mental Health Recovery Centre- is a new 44-bed medium and low forensic care facility at Blacktown.
- Community Mental Health Team

Blacktown Forensic Unit



Nepean Hospital



List of Mental Health Services within NBMLHD includes:

Triage and Assessment Centre (TAC) complements the existing Emergency Department and provides comprehensive mental health assessments, interventions, admissions and discharges in the Mental Health Centre and Nepean Emergency Department.

Mental Health Inpatient services at Nepean Hospital:

- Psychiatric Emergency Care Centre: 12-bedded short stay mental health unit for people who present at the Emergency Department with mental health issues.
- The Nepean Mental Health Centre (NMHC) is a 64-bedded mental health facility including high dependence, acute and Specialist Mental Health Services for Older Persons.

Other Mental Health Services:

- Access teams based at Penrith and Katoomba.
- Adult Community Mental Health teams based in Katoomba, Lithgow, Penrith, Springwood, St Marys and Windsor.
- Child, Youth and Family Mental Health Services include Perinatal Infant Mental Health Service (PIMHS), Child and Youth Mental Health Services (CYMHS), Whole Family Team (WFT).

Wagga Wagga Mental Health Unit



Wagga Wagga Base Hospital (WWBH) is the principal rural referral hospital within the Murrumbidgee Local Health District (MLHD). It offers a comprehensive range of inpatient and

community-based services. The hospital was rebuilt around 10 years ago, with the old hospital knocked down, and so the service operates within a modern and purpose-built hospital.

For Psychiatry, there are a total of 66 gazetted mental health beds, specifically: 22 adult acute low dependency (LDU), 8 adult acute high dependency (HDU), 20 adult mental health recovery unit (subacute), 8 Specialist Mental Health for the Older Person Service (SMHOPS) and 8 older person dementia (T-BASIS).

In addition to the four accredited and one unaccredited adult term, two of which include adult community time through the local community mental health team (CMHT), there are also accredited Child and Adolescent (C + A), Older Persons and Consultation Liaison (CL) terms. From a community perspective, there is the Wagga Wagga CMHT, based in the health services hub located in the grounds of WWBH, which covers child and adolescent (CAMHS), adult, older person (SMHOPS) and drug and alcohol (D + A), and there is a separate Intellectual Disability (ID) service. There are five other CMHTs within the MLHD, based in Deniliquin, Griffith, Temora, Tumut and Young. There are three junior doctor positions (1 intern and 2 resident), 1 in the older persons and recovery units, and two in the adult inpatient units.

Wagga has three attached medical school campuses, the University of New South Wales (UNSW), which caters for approximately 100 1st to 6th year students, the University of Notre Dame Australia (UNDA), who have approximately 12 third and fourth year students, and Charles Sturt University (CSU), with around half a dozen students. This allows registrars access to a broad range of teaching, education, and research opportunities, as well as the support of university professionals to assist with research methods and statistical analysis for joint research projects.

Rotations in Wagga Wagga offer a strong work-life balance, with no nights and limited overtime requirements, and is equidistant between Sydney and Melbourne. The surrounding areas have many scenic and nature-based opportunities and activities, along with various annual events in many of the small towns. The junior doctors and registrars within the hospital in general, and the mental health services in particular, work closely as a cohort, and there are regular social activities, such as weekly trivia nights.

Registrars are also exposed to some more unique learning opportunities, primarily through working in a rural or regional environment, which can shape access to care and services, and provides a different training and working experience to major metropolitan centres. The MLHD has a significant Indigenous population, along with opportunities to work with refugees and others from culturally and linguistically diverse populations.

There is a mental health specific academic program which runs regularly, and includes journal club, complex case presentation and morbidity and mortality meetings, along with registrar and psychiatrist lectures, and trainees have access through videoconference to all the academic and learning opportunities within the network.

Goulburn Mental Health Unit



Southern NSW
Local Health District

Chisholm Ross Centre is 32 bedded acute inpatient psychiatric unit.

Westmead Children's Hospital



The HallWard care team is an acute psychiatric inpatient service and cares for young people aged between 6-15 years who are experiencing acute emotional or mental health problems that cannot be managed in the community.

The other services include:

- Eating Disorders inpatient.
- Day and outpatient services.
- Inpatient rehabilitation service for functional somatic symptoms.
- Mental health assessment and treatment for patients admitted to medical wards and general outpatient services.

Private Mental Health Services in the SWAGS include:

- St John of God Hospital, Richmond.
- Ramsay Clinic Wentworthville.
- Kellyville Private Hospital.

Headspace Parramatta and Mt Druitt



Sydney South West North Coast Psychiatry Training Network

Network Director of Training	Dr Jean Starling Jean.Starling@health.nsw.gov.au
Education Support Officer	Putu Kusumayanthi Putu.Kusumayanthi@health.nsw.gov.au
Network Admin Officer	Sohayler Taukeiaho Sohayler.Sefesi@health.nsw.gov.au
Royal Prince Alfred SCOT	Dr Catriona Soutar Catriona.Soutar@health.nsw.gov.au
Concord Hospital SCOT	Dr Joanne Ferguson Joanne.Ferguson@health.nsw.gov.au
Bankstown Hospital SCOT	Dr Christabelle Hill Christabelle.Hill@health.nsw.gov.au
Liverpool Hospital SCOT	Dr Jonathan Yong JonathanVuiHau.Yong@health.nsw.gov.au
Campbelltown Hospital SCOT	Dr Kathy Watson Kathy.Watson1@health.nsw.gov.au
Port Macquarie SCOT	Dr Adrian Vasko Adrian.Vasko@health.nsw.gov.au
Coffs Harbour SCOT	Dr Mariann Jackson Mariann.Jackson@health.nsw.gov.au

General Information

The Sydney South West North Coast (SSWNC) Psychiatry Network covers the inner western suburbs of Sydney, running from central Sydney along the south of the harbour, then south west to Bowral. This area includes the inner west, with Sydney University and Royal Prince Alfred Hospital, and the south western suburbs which are one of the fastest growing areas in Sydney, with a culturally rich and diverse population, and large rapidly expanding hospitals including Liverpool and Campbelltown. The network offers a range of training and lifestyle experiences across the Network's hospitals and community health centres.

Affiliated universities include the University of Sydney, University of New South Wales, Western Sydney University, and their research centres and clinical academic units. Both Sydney and Sydney South West LHDs have research leaders who are able to support your scholarly project.

We are able to offer advanced training in general adult, child and adolescent, consultation liaison, old age psychiatry and addiction psychiatry.

The network also provides weekly teaching sessions at each site, and exam preparation both face to face and via TEAMS. We have psychotherapy supervisors for the long case, cognitive behavioural therapy training, and supervision for supportive psychotherapy.

The SSWMNC Psychiatry Training Network accredited training positions include:

Adult General Inpatient Psychiatry	Bankstown, Campbelltown, Liverpool, Royal Prince Alfred, Concord, Coffs Harbour and Port Macquarie
Perinatal, Child and Adolescent Psychiatry	Bankstown, Campbelltown (inpatient unit), Liverpool, Royal Prince Alfred (mother baby unit), Concord (Rivendell), Coffs Harbour and Port Macquarie
Consultation Liaison Psychiatry	Bankstown, Campbelltown, Liverpool, Royal Prince Alfred (including specialty STP positions), Concord, Coffs Harbour, and Port Macquarie
Psychiatry of Old Age	Liverpool, Bankstown, Campbelltown, Braeside and Concord

Early Psychosis Intervention Program	Liverpool, Croydon and Camperdown community teams
Addiction Psychiatry	Liverpool, Concord, Royal Prince Alfred, Port Macquarie and Coff's Harbour
Community Psychiatry	Liverpool, Bankstown, Fairfield, Campbelltown, Camperdown, Canterbury, Croydon, Marrickville, Redfern
Rehabilitation and Recovery Psychiatry	Concord, Liverpool and Coffs Harbour
Rural Psychiatry	Port Macquarie, Coffs Harbour and Kempsey
Specialty terms	Aboriginal Mental Health Teams Centre for Veteran's Health Care Ketamine Clinic STARTTS (refugee mental health service) Private hospital placements including St John of God Burwood and Ramsey Campbelltown

Our network services: Sydney LHD

Royal Prince Alfred Hospital



RPA was founded in 1882, one of Sydney's oldest hospitals, and the original teaching hospital for the University of Sydney. Medical and surgical teams include highly specialized transplant, cardiothoracic and head and neck surgery, with Australia's first liver transplant service. More recent additions include the Chris O'Brien Cancer Service and the Professor Marie Bashir Centre, an Inpatient Mental Health Service with general

and high-dependency beds, plus, an Eating Disorders IP and OP service and a Perinatal Mental Health Ward. There are also general and specialised Consultation Liaison Services and Community Mental Health Service on site.

Concord Hospital



Concord was originally set up to serve veterans but has grown to provide general medical and surgical services to the inner west of Sydney. Specialty teams include Sydney's largest Burns Unit, Geriatric Medicine and Old Age Psychiatry teams, and a Neuroimmunology team.



Concord Centre for Mental Health

Concord Centre for Mental Health, a large IP unit, with 170 + beds, is also on Concord grounds. This service includes high dependency, general acute, rehabilitation and old age beds. A new Forensic Rehabilitation Unit is being built and will be operational in 2026.



Rivendell Adolescent and Family Unit

Rivendell is one of the earliest specialty adolescent services in Sydney. It now combines a small Monday to Friday IP service with day patients, a school for specific purposes, and a tertiary OP service. The team also supports the Walker Unit, an adolescent IP service at Concord Centre for Mental Health.

Our network services: South West Sydney LHD

Liverpool Hospital



Liverpool Hospital, probably starting as a tent hospital for soldiers and convicts in the 1790's. It has developed to become one of Sydney's largest Hospitals, known for its multicultural population (the RUDAS, the Rowland Universal Dementia Assessment Scale, was developed here). Liverpool has international recognition as a trauma centre and offers a wide range of medical and surgical services, including obstetrics and paediatrics. The Mental Health Services include 50 IP beds, with a rehabilitation service

as well as acute care. Community Mental Health teams, Consultation Liaison, CAMHS teams and addiction services are also offered.



Bankstown Hospital

Bankstown-Lidcombe hospital is a mid-sized general hospital in a culturally diverse area, offering general medical, surgical, obstetric and paediatric services. Mental Health Services include a 30-bed IP service, CL, community teams and a CAMHS service.

South Eastern Sydney Illawarra (SESI)

Psychiatry Training Network

The SESI Psychiatry Training Network boasts a range of career, lifestyle and training opportunities that are unsurpassed. Our hospitals and community clinics hug the coast from iconic Byron Bay through Bondi to Jervis Bay and everything in between. We include three universities, multiple teaching hospitals and over one hundred and sixty Royal Australian and New Zealand College of Psychiatrists (RANZCP) accredited training positions. Many services have supportive RMO rotations.

We are a large psychiatry Training Network in New South Wales, providing a complete accredited RANZCP program from Basic through to completion of Advance training. Trainees rotate through all the mandatory terms and have a choice of a broad range of additional placements including subspecialties as diverse as Old Age Psychiatry, Child Psychiatry, Early Intervention, Emergency Psychiatry, Private hospitals, Peri-Natal Psychiatry, Justice Health, Psychotherapy and Intellectual Disability Psychiatry. There are many professorial units to which registrars can be allocated, including the Black Dog Institute, CRUFaD and Neuropsychiatry.

Training Hospitals include:

- Prince of Wales Hospital
- Sydney Children's Hospital Network (Randwick)
- Royal Hospital for Women
- St Vincent's Hospital
- St George Hospital
- The Sutherland Hospital
- The Wollongong Hospital
- Shellharbour Shoalhaven Hospital
- South Pacific Private Hospital
- Tweed Valley Hospital
- Lismore Base Hospital
- Byron Central Hospital
- Justice Health & Forensic Mental Health Network

Although we span a large service, each six-month rotation sees you as part of a small functioning unit with its own culture and cohesion. You will have variety, from rural to inner city, the richest and the poorest areas of NSW, from pre-natal mental health to old age. Trainees are a welcome part of the team, working alongside psychiatrists.

Each site has a local psychiatrist who coordinates training, Site Co-ordinator of Training (SCoT). The trainees have a strong voice in plans for training, from the multiple trainee representatives on the Network Training Committee to the Site Trainee Representatives allocated at each Hospital. We have an enviable pass rate in the RANZCP exams, supported by specific teaching in examination technique.

Every six months you will meet with the Director of Psychiatry Training and the Psychiatry Education Support Officer to review your training term and your progress through the RANZCP training process. We try to be as flexible as possible in supporting your training experience including supporting short-term secondments to other Psychiatry Networks in NSW and interstate and accrediting short term training experiences overseas.

Trainees interested in rural training have the opportunity to live and train in Northern NSW. Northern NSW LHD is part of the SESI Psychiatry Training Network and offers both rural terms as well as a complete training program. This includes a diverse and growing range of experiences across all stages of psychiatry training, including mandatory terms and Advanced Training pathways. Training posts are situated across three sites - Tweed Heads, Byron Bay, and Lismore. Rural trainees are supported by the Rural Director of Training and team.

For further queries;

Sydney & ISLHD

Dr Alon Faingold
Director of Psychiatry Training

SESI Psychiatry Training Network
alon.faingold@health.nsw.gov.au

Carmen Wallace

Education Support Officer

SESI Psychiatry Training Network

Rural (NNSWLHD)

Dr Tessa Cookson
Rural Director of Psychiatry Training

SESI Psychiatry Training Network
Tessa.Cookson@health.nsw.gov.au

Elouise Coppin

Rural Education Support Officer

Elouise.Coppin@health.nsw.gov.au

Tel (02) 9113 1527

carmen.wallace@health.nsw.gov.au

ISLHD

Stuart Allison / Tad Tietze

Co-SCoTs, Illawarra Hospitals

Stuart.Allison@health.nsw.gov.au

Tadeusz.Tietze@health.nsw.gov.au

Megan Byron

Illawarra Medical Education Support
Officer

megan.byron@health.nsw.gov.au

Psychiatry Training Centre (Network B: Northern Sydney Central Coast)



Quick Links:

<https://www.sydney.edu.au/brain-mind/>

<https://nswapt.org/links>

<https://www.heti.nsw.gov.au/education-and-training/our-focus-areas/medical>

<https://www.heti.nsw.gov.au/education-and-training/courses-and-programs/psychiatry-training-program>

<https://www.ranzcp.org/training-exams-and-assessments/support-help-centre>

Psychiatry Training Centre:

The Psychiatry Training Centre strives to contribute to the achievement of world's best practice in the care of mentally ill patients of the Network, by the rotation of doctors throughout the Network who are trained with careful adherence to the requirements of the Royal Australian & New Zealand College of Psychiatrists (RANZCP) Regulations.

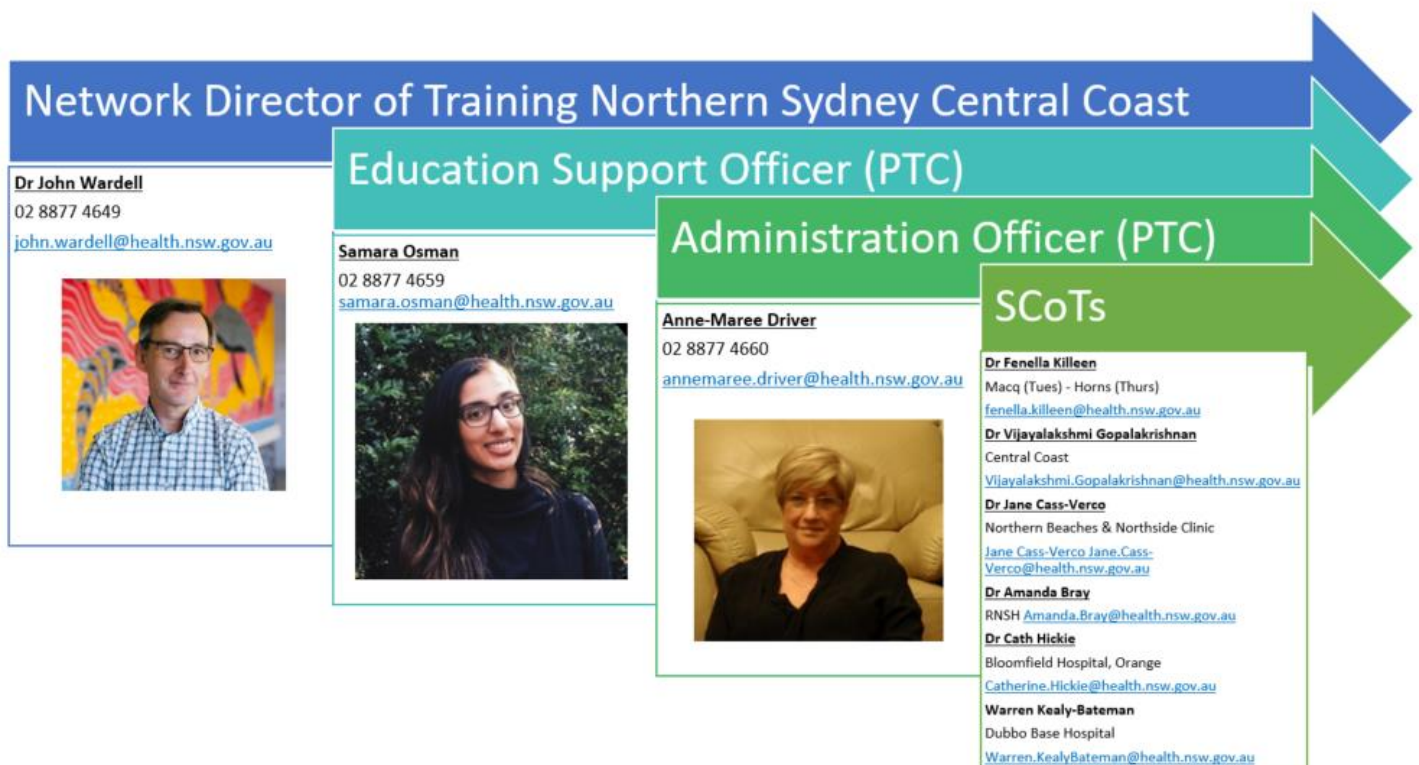
The Psychiatry Training Centre is committed to ensuring the provision of high quality postgraduate training and supervision to enhance doctors' knowledge and skills, always attending to the personal needs of the trainees.

Network B comprises an excellent network of hospitals and community services with units of world repute, spanning four Local Health Districts (Northern, Central Coast, Western and Far Western).

Our training Network covers a wide area, demographically and geographically providing numerous opportunities for living close to work, whether one prefers urban, suburban, semi-rural or rural settings. We offer over 114 accredited training posts and four relief posts throughout the training Network. Training opportunities include a variety of sub-specialties such as Addictions, Aged Care, Child & Adolescent, Consultation Liaison, Rehabilitation, Forensic and Community Psychiatry.

Training is enriched by the variety of positions in the public sector but also by training in the private and NGO sectors, offering experience in terms such as Mood Disorders, Eating Disorders, Perinatal Psychiatry, Aboriginal Mental Health and Psychotherapy. There is a strong academic presence at Royal North Shore Hospital, which has a leadership role in research in psychological medicine. The editors of both RANZCP journals work within Network B. We have a long tradition of training quality psychiatrists and many of those who trained locally now provide supervision to current trainees.

Orientation Tree



The PTC has three staff members located at Macquarie Hospital: Dr John Wardell (Director of Training), Ms Samara Osman (Education Support Officer), and Ms Anne-Maree Driver (Administration Officer).

Each training site has a Site Coordinator of Training (SCoT), listed above.

Network Sites:

Royal North Shore Hospital & Coral Tree Family Services

Greenwich Hospital

Macquarie Hospital

Northern Beaches Hospital

Mona Vale Hospital

Hornsby Hospital

Northside Group St Leonards Clinic

Royal Rehabilitation Hospital

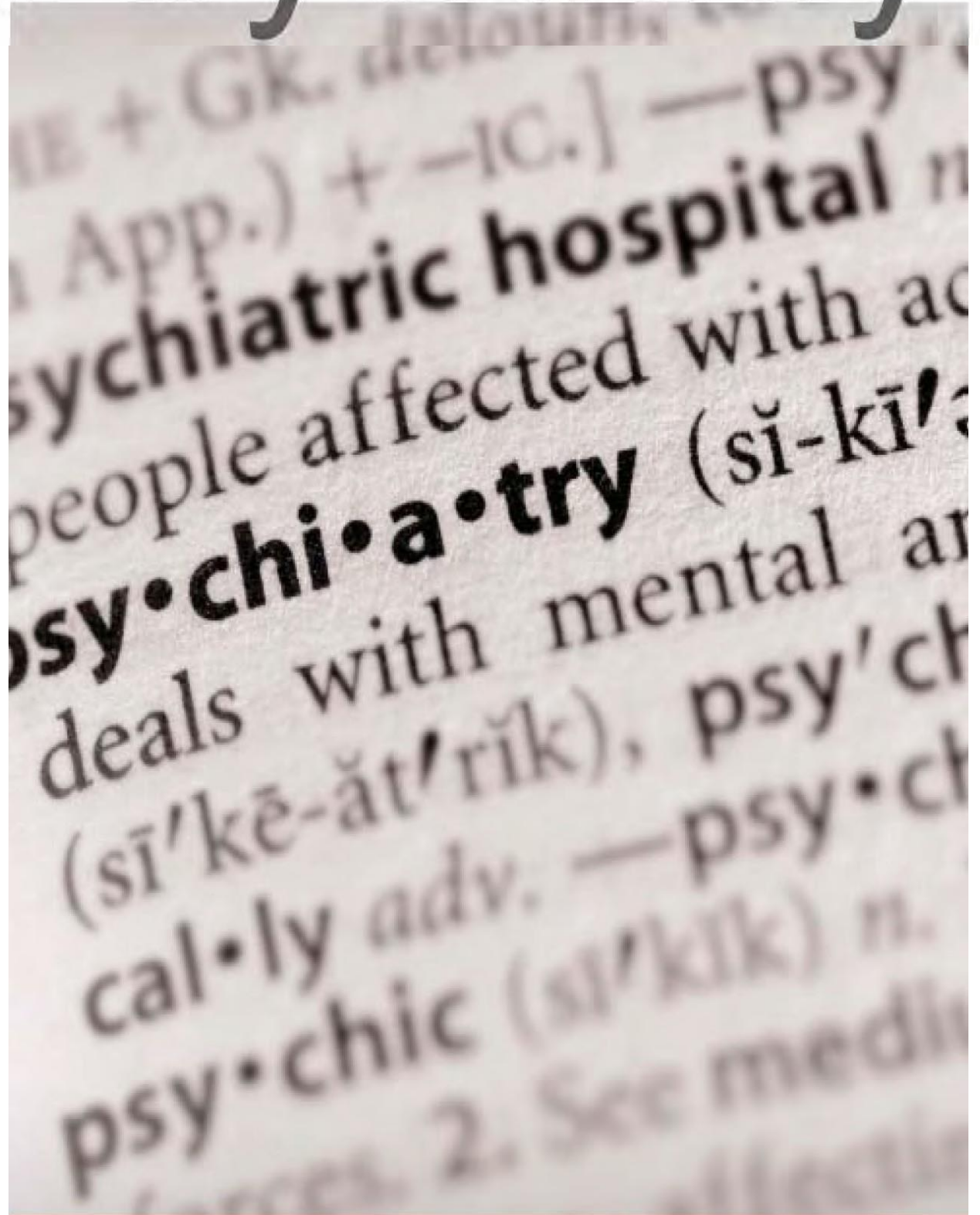
Gosford Hospital & Community Services

Wyong Hospital & Community Services

Dubbo Base Hospital
Bloomfield Hospital, Orange
Bathurst Base Hospital
Broken Hill Base Hospital
Royal Far West
Ryde Community Health Centre
Brookvale CHC
NSW Justice Health

HUNTER NEW ENGLAND TRAINING IN

Psychiatry



HNET
Psychiatry



HNET
Psychiatry

Visit our website: <https://www.hnehealth.nsw.gov.au/HNET>

About HNET



HNET refers to Hunter New England Training (in Psychiatry)

We are recognised as a national leader in psychiatry training. An integrated unit within Hunter New England Mental Health (HNEMH) catering for all the training and administrative needs of medical staff in our service.

The HNET Philosophy

We believe the HNET philosophy is a unique one in Australian psychiatry training. Our belief is that health service needs should support training and vice versa. We also believe in recognising psychiatry trainees at an early stage and supporting them in their career choice. We have implemented an Accelerated Psychiatry Program and JMO Teaching Program for Interns

in our service to support our most junior medical staff. We place great emphasis on those trainees who join our service, offering a contract to cover the period of basic training, flexibility in work hours, and a tailored training program, all of which have led to very high written and clinical examination success rates since 2004. We offer high quality Advanced Training placements in a range of subspecialty areas in our service and the majority of such Fellows join our service as Staff Specialists upon graduation.

Hunter New England Health - a great place to work, a great place to live

HNEMH is part of the HNE Local Health District, a recognised leader in health

innovation in Australia. The Hunter New England lifestyle is one of the best on offer in Australia, whether you are seeking comfortable cosmopolitan beach-side living or a semi-rural relaxed lifestyle.

Construct your Career with



HNET
Psychiatry





REGISTRAR POSITIONS

HNET is proud of its premier Psychiatry Training Program

Each year we select 8-10 First Year Trainees to join our Registrar cohort. Psychiatry Trainees who are successful in being appointed to the HNET Network are provided with a tenured training experience, which allows them to fulfill all of their Basic Training requirements with the Royal Australian and New Zealand College of Psychiatrists (RANZCP). Registrars typically undertake the first 12-months of their training as full time. You will commence your training in Acute Adult Psychiatry, which is available at the Mater Hospital in Newcastle (Waratah), The Maitland Hospital, Morisset Hospital, Manning Base Hospital, or Tamworth Rural Referral Hospital. A 6-month rural rotation is required for psychiatry trainees in NSW and our current sites for this are Tamworth, Armidale and Taree. On secondment, you will receive travel support, accommodation at our expense, a grade higher in pay, and access to the training program via videoconference. Other mandatory basic training experiences are Child and Adolescent, available at the Nexus Inpatient Unit or the Newcastle, Lake Macquarie, Hunter Valley, Taree or Tamworth community CAMHS Services; and Consultation- Liaison Psychiatry, available at either the Mater, John

Hunter, Maitland, or Tamworth Hospitals. The remainder of training consists of electives and various assessments, including a scholarly project, a long psychotherapy case, workplace based assessments (WBAs) that lead to entrustable professional activities (EPAs), and examinations (both written and clinical). The type of elective rotations we have available include:

- Various community mental health service rotations
- Older persons psychiatry
- Forensic psychiatry
- Neuropsychiatry
- Rehabilitation psychiatry
- Addiction psychiatry
- Drug & Alcohol community secondment
- Education and training rotation
- Psychotherapy training

HNET is an award-winning training program.

In 2008, HNET was a recipient of the HNE Health Quality Award and a finalist in the NSW Health Quality Awards for its training programs. More recently in 2021, HNET was a finalist in the HNE Health Excellence Awards, High Value Health Care Award (People & Culture) with a submission titled "Training and sustaining a psychiatry medical workforce".

Training is tailored to the developmental level of the trainee

with specific lectures provided to First Year trainees, trainees midway through their training, and trainees approaching examinations. Teachers include local experts as well as binational and international experts.

Trainees are paid to attend lectures during work time and lectures are not interrupted by pagers or mobile phones. HNET has an excellent reputation for training that is exemplified by the success of our trainees – HNET registrars are highly successful in their RANZCP examinations, evidenced by a high pass percentage comparative to the rest of Australia and New Zealand.

Since 2007, the local Formal Education Course has been provided free of any cost to HNE network trainees! We honestly believe that HNET is not only the best psychiatry training program in NSW but one of the best in Australia and New Zealand. But don't ask us - speak to our trainees and Consultants.



Dr Harsimrat Sandhu, Director of Training, HNET



HNET Psychiatry

What happens after Basic Training?

Following successful completion of Basic Training requirements, registrars are invited to apply for Advanced Training positions in the generalist stream or in the subspecialty streams. Advanced Trainees are supported to attend an appropriate educational program, as part of their work time. Ultimately, we hope that our trainees will take up a senior position in our organisation as a Staff Specialist.

HNET encompasses the full spectrum of Advanced Training opportunities available under the RANZCP

Recent HNET Advanced Trainees have achieved subspecialty Advanced Training Certificates in the following subspecialties:

- Adult
- Child and Adolescent
- Consultation-Liaison
- Forensic
- Older Persons
- Psychotherapy
- Addiction

Formal training for Advanced Trainees is generally organised on a Statewide or even binational level

HNET supports its ATs in attending formal training programs with paid study leave. We also recognise that Advanced Training is a particularly important phase in your

development as a Consultant Psychiatrist and therefore provide a local training and mentoring program to assist you in the development of professional and consultant level skills in order to prepare you for the next step in your career. Our advanced trainees form peer review groups in preparation for formal CPD requirement and play key leadership roles in the service, often taking on senior tasks such as developing policies and guidelines, committee participation, organisation of training programs and administration for other medical staff.

HNET also welcomes applications for Advanced Training from suitable Registrars not currently working for HNE Local Health District



Support for your Medical Education

The Medical Education Support Officer is a full-time role dedicated to training and is the main point of contact for College Trainees. The MESO organises regular training sessions for Stage One and Stage Two registrars, as well as exam preparation sessions for College written examinations.

The training scheme keeps a record of all training activities and can advise on trainees' College trajectory. It is important to note that training for college trainees in

our region is free! one of the impressive achievements of HNET is that all its formal training programs are delivered in live sessions with face-to-face delivery, as well as being videoconference to enable trainees to participate in education from distant sites. It also means that we are in high demand from trainees in other parts of rural Australia to provide formal training.



HNET
Psychiatry

Medical Administration

**Medical Administration is part
of the overall HNET Unit**

Medical Administration is likely to be your first point of contact on commencing with the service and will assist you in organising registrations, visas (where required), pay documentation and orientation requirements, as well as being responsible for organising the after hours roster for the junior and senior medical staff.

Contact Medical Admin on (02) 4033- 5156 or email at

HNET@hnehealth.nsw.gov.au



Karen Ruberto,

***Medical
Administration Team
Leader, HNET***



**Dr Anand Swamy, Director
Medical Services, HNET**

THE HUNTER NEW ENGLAND LIFESTYLE

	<p>Newcastle Unofficial capital of the Hunter region and NSW's 2nd largest city. Home to HNEMH HQ, Child Unit and Acute Inpatient Services, and University of Newcastle.</p>	<p>Lake Macquarie Sister city to Newcastle. Family oriented Lake-side living. Rehabilitation and Forensic Inpatient Services based at Morisset Hospital</p>
	<p>Maitland and the Hunter Valley The Regions fastest growing area and Australia's best known wine region. Maitland Mental Health Unit at Maitland Hospital and Integrated Community Services.</p>	<p>Manning Natural lake paradise and summertime beaches without the crowd. Inpatient and community mental health services at Manning Hospital</p>
	<p>Tamworth Big sky country. Country Music Capital. NSW's busiest and largest Emergency Department. Inpatient and community mental health services.</p>	<p>Armidale Cosmopolitan rural city, hosting a regional medical school (University of New England). Small voluntary inpatient unit and attached community mental health services</p>

Hunter New England Health:

- Provides care for approximately 921,000 people, including 53,000 Aboriginal and Torres Strait Islander people
- Covers a geographical area of over 130,000 square kilometres - the size of England
- Employs approx. 16,000 staff
- Is supported by 1600 volunteers
- Spans 25 local government areas
- Has strong academic and research links with the two University medical schools in the region (UON and UNE) and the Hunter Medical Research Institute, NSW's largest medical research organisation
- Places a strong emphasis on medical leadership in the management and improvement of its services
- Has an international reputation for innovation and reform in health
- Places a strong emphasis on career development with several high quality training programs for medical specialists
- Values contributions from all of its medical staff, including recognising the contribution of international medical graduates who frequently seek out positions in our service based on our reputation for support

HNET Contacts:

Dr Anand Swamy,
 Director Medical
 Services: 4033-5160
Anand.Swamy@health.nsw.gov.au

Dr Harsimrat Sandhu,
 Director of Training:
 4033-5158
Harsimrat.Sandhu@health.nsw.gov.au

Medical Education Support
 Officer: 4033-5157 HNELHD-MESOPsych@health.nsw.gov.au

Dr Vinodkumar Raveendran,
 Prevocational Education &
 Training 4033-5155
Vinodkumar.Raveendran@health.nsw.gov.au

Medical Administration: 4033-5156
HNELHD-HNET@health.nsw.gov.au



HNET Psychiatry

 <p>YOUR FORMAL EDUCATION PROGRAM IS FREE</p> <p>That's right! No cost to HNE trainees for our College accredited course which has been rated one of the best in Australia and New Zealand based on trainee feedback.</p>	<p>THE HUNTER NEW ENGLAND BEACHES AND COUNTRYSIDE ARE BEAUTIFUL PLACES TO LIVE AND WORK</p>  <p>From the beaches of Newcastle to the Hunter Valley vineyards to the rolling hills of the country, there is something to suit every taste in the Hunter New England region.</p>	<p>EXAM & HURDLE TASK PASS RATES EXCEED STATE AND BINATIONAL AVERAGES</p> <p>Dedicated exam preparation programs with input from experts in the field and previous successful candidates.</p>	
<p>UNIQUE AND EXCITING ADVANCED TRAINING OPPORTUNITIES</p> <p>We have a comprehensive suite of well-supported advanced training terms in all specialties, including Neuropsychiatry and Education.</p>	<p>10 REASONS TO TRAIN WITH HNET PSYCHIATRY</p>		<p>COLLEGIATE ATMOSPHERE</p> <p>Peer support groups, mentoring programs, and HNET sponsored social events.</p>  <p>YOU CAN COUNT ON SUPPORT FOR PROFESSIONAL DEVELOPMENT</p> <p>For example, communication skills training, leadership and management support, specific psychotherapies, conjoint appointments with the University, etc.</p>
<p>THE SUPPORT YOU RECEIVE FROM THE EXPERIENCED AND ENCOURAGING HNET TEAM IS SECOND TO NONE</p>  <p>A unique approach with specific Coordinators of Training with clear tasks of coordinating assessments and assisting with projects.</p> <p>Meet our SCoTs at www.hnehealth.nsw.gov.au/hnet</p>	 <p>SUPPORT FOR RURAL TRAINING</p> <p>A NSW provider of specially funded rural training pathways for individuals.</p>	<p>YOU CAN SUCCESSFULLY COMPLETE ALL OF YOUR TRAINING WITHIN HNET</p> 	 <p>THE SIZE OF THE PROGRAM IS NEITHER MONOLITHIC, NOR BOUTIQUE</p>



HNET Psychiatry


HNET MISSION

A commitment to a high quality training program, early identification of potential trainees, retaining high quality medical staff and matching training needs to service needs and vice versa.


The Hunter New England Mental Health Psychiatry Training Program (HNET Psychiatry) is the only regional based psychiatry training program in Australia. Our mid-sized program ensures sufficient numbers of trainees at each level to make progressing through training requirements sustainable, with a collegiate and "personal-touch" focus.

Exam and hurdle task pass rates are higher than state and binational averages. HNET Psychiatry offers fantastic examination preparation programs.

For more information about medical jobs and training at HNET, please contact us at

 facebook.com/HNETPsychiatry

 www.hnehealth.nsw.gov.au/hnet

 HNELHD-HNET@hnehealth.nsw.gov.au

District Hospitals with Mental Health Units

Mater Hospital, Waratah
John Hunter Hospital
Maitland Hospital
Morisset Hospital
Manning Hospital
Tamworth Hospital
Armidale Hospital

Phone

Psychiatry Training:	+61-2-4033-5155
Medical Administration:	+61-2-4033-5156

 WHERE TRAINING IS THE PRIORITY

HNET PSYCHIATRY

RANZCP Training | Prevocational Training | Excellence

**MEDICAL STUDENT
TEACHING SUPPORT**

Orientation

JMO Training HNAPP accelerated
program for those with
interest in psychiatry

RANZCP including communication
skills training with
simulated patients
Formal Education Course

Subsidised training for HNE trainees
(saving of about \$20,000)

EXAM PREP MCQ / ESSAY
OSCE

SCHOLARLY PROJECT SUPPORT

Facilitating mentoring, peer group and social activities

Psychotherapy training & supervision

CBT / Anxiety training clinic

Leadership & Management training

Exciting range of terms e.g., IRTP / STP
Education Neuropsychiatry

Fellowship....

IT'S TIME TO CELEBRATE!



Health
Hunter New England
Local Health District

HNET
Psychiatry

supporting
your
training